

# WFH LED

High-bay lighting for hazardous  
& wet locations

**RIG-A-LITE™**  
An Avail Infrastructure Solutions Company



## Classifications

- Class I, Division 2, Groups A, B, C, & D
- Class II, Division 2, Groups F & G
- Class III
- UL 844 Hazardous Locations
- UL 1598 Wet Locations
- UL 8750 LED Safety
- NEMA 4X
- CUL Listed
- NSF Certified Food Equipment
- High Pressure Hose Down
- One Piece Welded Aluminum Construction
- Rated for -20° F minimum starting temperature
- 50° C (122° F) maximum ambient temperature
- Single or dual hub mounting
- Bolt-on and gasketed cast aluminum hubs
- Water tight, ideal for food processing
- 4000K (CCT) Standard- other options available on catalog number logic page
- 60,000 or more hours rated life expectancy
- Five year warranty against manufacturer's defects
- Buy American Act (BAA) Compliant



[availinfra.com/rig-a-lite](http://availinfra.com/rig-a-lite)

8500 Hansen Road,  
Houston, TX 77075  
(713) 943-0340

# WFH LED

## High-bay lighting for hazardous & wet locations

### Key Features

- 1 Welded aluminum lens frame with electrostatically applied baked on epoxy finish
- 2 Watershed design
- 3 Stainless steel captive hardware
- 4 Philips LED System driver and PCB



### Additional Features

- Ceiling, pendant and wall-mounting options
- No external fins
- Optional dimming driver

### Standard Materials

**Body:**

Corrosion resistant aluminum with electrostatically applied baked on epoxy finish

**Gasket:**

One-Piece Silicone

**Lens:**

High Impact Clear Acrylic

**Hardware:**

Stainless Steel

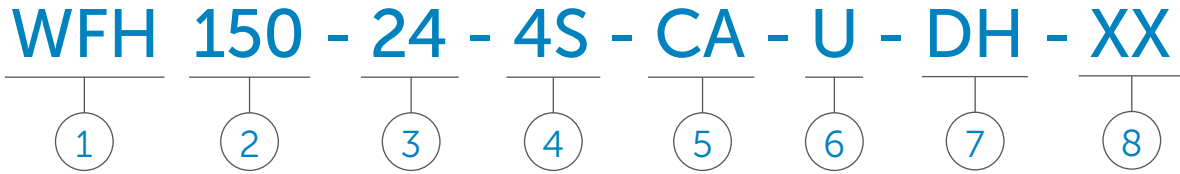
### LED Series

Size	Description	Voltage	Catalog Number
2 foot X 4 foot	148 Watt LED Luminaire with Clear Acrylic Lens	120-277V 50/60HZ	WFH150244SCAU
		347-480V 60HZ	WFH150244SCAN
	148 Watt LED Luminaire with Prismatic Acrylic Lens	120-277V 50/60HZ	WFH150244SPAU
		347-480V 60HZ	WFH150244SPAN
	148 Watt LED Luminaire with Clear Polycarbonate Lens	120-277V 50/60HZ	WFH150244SCPU
		347-480V 60HZ	WFH150244SCPN

# WFH LED

## High-bay lighting for hazardous & wet locations

### Catalog Number Logic



**1 BASIC SERIES**  
 WFH LED Fixture  
 Class I, Division 2, Groups A, B, C, & D  
 Class II, Division 2, Groups F & G  
 Class III  
 UL 844 Hazardous Locations  
 UL 1598 Wet Locations  
 UL 8750 LED Safety  
 NEMA 4X  
 CUL Listed  
 NSF Certified Food Equipment  
 Wash Down Rated

**2 LAMP CURRENT/LAMP WATTAGE**  
 150 = 148W LED

**3 NOMINAL FIXTURE LENGTH**  
 24 = 2 x 4 Foot

**4 NUMBER OF LED STRIPS**  
 4S = 4 LED Strips

**5 LENS TYPE**  
 CA = Clear Acrylic  
 PA = Prismatic Acrylic  
 CP = Clear Polycarbonate

**6 VOLTAGE/FREQUENCY**  
 N = 347 thru 480V 50/60 HZ  
 U = 120 thru 277V 50/60 HZ

**7 MOUNTING**  
 DH = Dual Hub 1/2 in. NPT  
 SH = Single Hub 3/4 in. NPT

**8 OPTIONS<sup>1</sup>**  
 F = Single Fuse- For USL luminaires only (For luminaires rated 277 VAC or less)  
 D = Dimmable (0-10 Volt)  
 DF = Double Fuse- For USL luminaires only (For luminaires rated 277 VAC or less)  
 HNG = Hinged Lens Frame  
 50 = 5000K (CCT)

<sup>1</sup>Consult factory for pricing

*Catalog logic is for explaining catalog number structure only. Not all combinations are possible; consult factory for catalog numbers not listed in charts.*

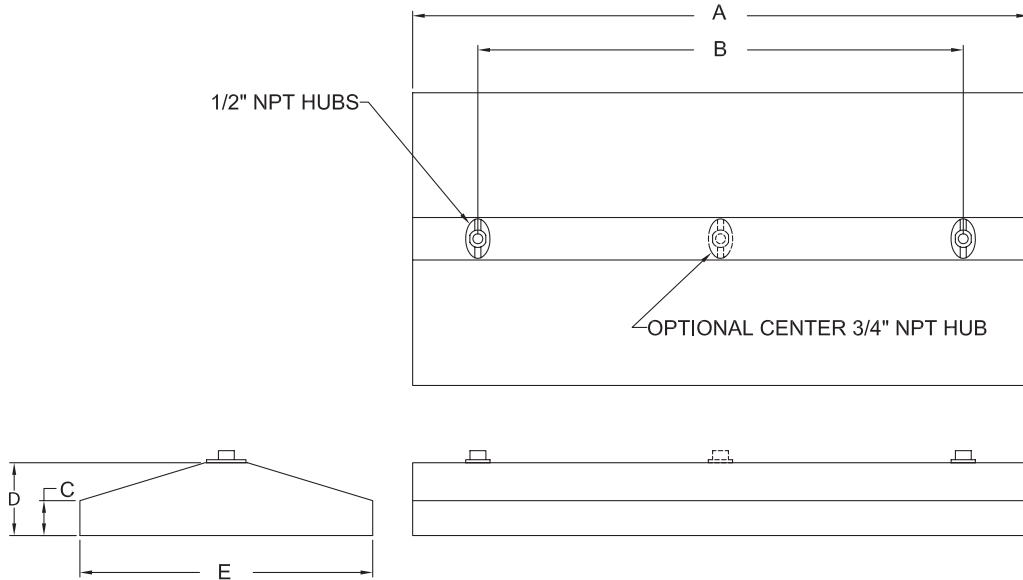
### Certification Guide

Operating Temperature Code			
WFH Series	Class I, Division 2 Groups A, B, C & D	Class II, Division 2, Groups F & G Group III	Maximum Ambient Temperature
WFH150244XXU	T5	T6	50° C

# WFH LED

## High-bay lighting for hazardous & wet locations

### Fixture Dimensions (inches)



WFH Series	Dimensions (inches)					Hub Size	Boxed Weight	Shipping Volume (Boxed Fixtures)
	A	B	C	D	E			
2 ft. x 4 ft. Fixture	50.75	40.0	2.88	6	24.13	1/2	39 lbs.	4.7 cu. ft.

### Accessories

#### Eye Bolt Mounting Kit



Catalog Number: 53116  
 Shipping Weight: 3.0 lbs.  
 Cable or Chain Not Included  
 Required with Single Hub Mounting Option

#### Fixture Hanger



3/4 in. Male Thread  
 Catalog Number: HCK75  
 Shipping Weight: 1.7 lbs.

#### Y Fit Cable with 2 ft. Legs



Stainless Steel  
 12 ft. Catalog Number: GRYSS122  
 22 ft. Catalog Number: GRYSS222  
 Shipping Weight: 4 lbs.

#### Occupancy Sensor



120/277VAC Sensor Module  
 Catalog Number: 76007  
 Shipping Weight: 0.25 lbs.  
**Lenses:**  
 10' Mounting Height Number: 76003  
 20' Mounting Height Number: 76008  
 40' Mounting Height Number: 76009  
 (not suitable for hazardous locations)

# WFH LED

## High-bay lighting for hazardous & wet locations

### Coefficients of Utilization

#### WFH150244SPAUXX

% Effective Ceiling Cavity Reflectance rcc	80			50			10		
	50	30	10	50	30	10	50	30	10
% Wall Reflectance rw									
Room Cavity Ratio RCR	Effective Floor Cavity Reflectance 20%								
0	1.19	1.19	1.19	1.11	1.11	1.11	1.02	1.02	1.02
1	1.06	1.02	.99	.99	.97	.94	.92	.90	.88
2	.94	.88	.83	.89	.84	.80	.83	.80	.77
3	.84	.76	.70	.79	.73	.69	.74	.70	.66
4	.75	.67	.61	.72	.65	.60	.67	.62	.58
5	.68	.59	.53	.64	.57	.52	.61	.55	.51
6	.61	.52	.46	.58	.51	.46	.55	.49	.45
7	.55	.46	.41	.52	.45	.40	.50	.44	.39
8	.50	.42	.36	.48	.40	.35	.45	.39	.35
9	.45	.37	.32	.43	.36	.31	.41	.35	.31

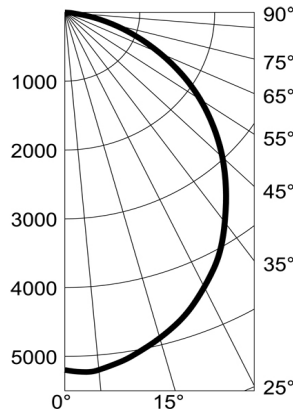
#### WFH150244SCAUXX

% Effective Ceiling Cavity Reflectance rcc	80			50			10		
	50	30	10	50	30	10	50	30	10
% Wall Reflectance rw									
Room Cavity Ratio RCR	Effective Floor Cavity Reflectance 20%								
0	1.19	1.19	1.19	1.11	1.11	1.11	1.02	1.02	1.02
1	1.06	1.03	.99	1.00	.97	.95	.93	.91	.89
2	.95	.89	.84	.89	.85	.81	.83	.80	.77
3	.84	.77	.71	.80	.74	.69	.75	.71	.67
4	.75	.68	.61	.72	.65	.60	.67	.63	.59
5	.68	.59	.53	.64	.57	.52	.61	.55	.51
6	.61	.52	.46	.58	.51	.45	.55	.49	.45
7	.54	.46	.40	.52	.44	.39	.49	.43	.39
8	.49	.41	.35	.47	.40	.35	.45	.39	.34
9	.45	.36	.31	.43	.36	.31	.41	.35	.30

#### Candlepower Distribution

Deg.	ParL.	22.5	45	67.5	Norm
0	5196.8	5196.8	5196.8	5196.8	5196.8
15	4877.6	4856	4863.1	4880.3	4898.5
25	4433.2	4453.2	4423.1	4401.1	4404
35	3807.6	3842.6	3816.6	3730.1	3423.3
45	3086.2	3124.5	3089.7	2995.8	2973.9
55	2346.8	2392.8	2343.4	2224.3	2205.7
65	1521.8	1589.6	1552.2	1143.6	1402.1
75	745.5	770.1	754.2	674.3	659.4
85	103.8	104.1	101.8	96.9	98.6
90	2.2	2.1	2.2	2.2	2.3

#### Photometric Data

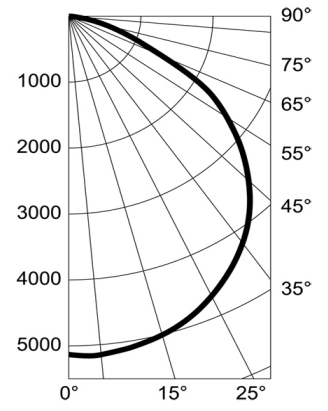


Total Lumens	13,090
Input Power (watts)	148.6
Efficacy (Lumens/Watt)	88.1
CRI	82.7
CCT	4000

#### Candlepower Distribution

Deg.	ParL.	22.5	45	67.5	Norm
0	5130.9	5130.9	5130.9	5130.9	5130.9
15	4933.1	4930.6	4959	4975.2	5004.9
25	4630.2	4626.9	4648.3	4663.9	4684
35	4158.1	4160.8	4171.3	4187.8	4200.5
45	3514.6	3521.1	3523.1	3522.4	3524.8
55	2711.4	2715.6	2697.5	2690.4	2676.6
65	1722.6	1736.1	1702.8	1648.9	1429
75	922.2	926.3	756.7	712.2	731.2
85	44.5	47.7	55	60.3	59.6
90	2.1	2	2	2.2	2.3

#### Photometric Data



Total Lumens	14,112
Input Power (watts)	148.6
Efficacy (Lumens/Watt)	95
CRI	82.6
CCT	4000



An Avail Infrastructure Solutions Company

[availinfra.com/rig-a-lite](http://availinfra.com/rig-a-lite)

8500 Hansen Road,  
Houston, TX 77075  
(713) 943-0340