

MAR2 LED

Linear LED lighting for hazardous locations

RIG-A-LITE™
An Avail Infrastructure Solutions Company



Classifications

- Class I, Division 2, Groups A, B, C & D
- UL 844 Hazardous Locations
- UL 1598A Marine Outside Type
- UL 1598 Wet Locations
- UL 8750 LED Safety
- CSA C22.2 #250.0-08
- CSA C22.2 #137-M1981
- NEMA 4X
- IP66
- 55°C Ambient Temperature
- Tested to LM 79 & LM 80
- Buy American Act (BAA) Compliant



availinfra.com/rig-a-lite

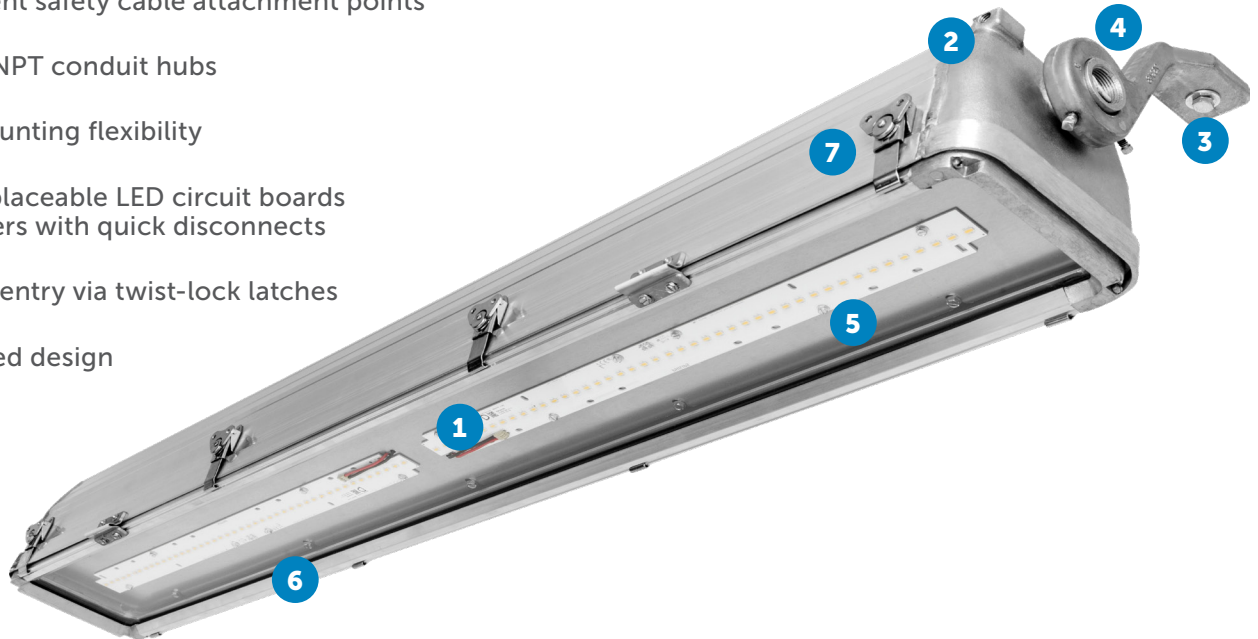
8500 Hansen Road,
Houston, TX 77075
(713) 943-0340

MAR2 LED

Linear LED lighting for hazardous locations

Key Features

- 1 Heavy-duty .094" thick extruded housing
- 2 Permanent safety cable attachment points
- 3 Two 3/4" NPT conduit hubs
- 4 360° mounting flexibility
- 5 Field-replaceable LED circuit boards and drivers with quick disconnects
- 6 Toolless entry via twist-lock latches
- 7 Watershed design



Additional Features

- Offset mounting bracket enables flush mounting
- Dimmable driver
- Optional pre-wired feed-through
- Low-profile design
- 4 kV surge protection (10kV option available)
- 5-year warranty

Standard Materials

Body:

5052-H32 Aluminum (less than .4% copper content)

Gaskets:

One-piece Silicone

Lens:

Acrylic

Hubs (2):

A361 Aluminum (less than .4% copper content)

Latches:

Stainless Steel

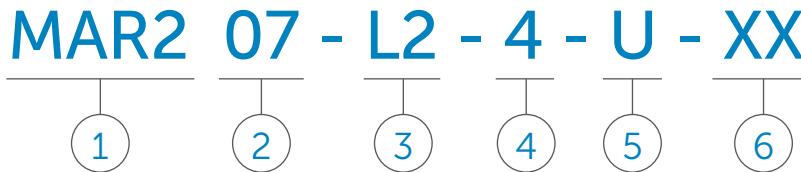
Hardware:

Stainless Steel

MAR2 LED

Linear LED lighting for hazardous locations

Catalog Number Logic



1
BASIC LUMINAIRE
 MAR2 LED
 Class I, Division 2, Groups A, B, C & D
 UL 844 Hazardous Locations
 UL 1598 Wet Locations
 UL 1598A Marine Outside Type
 UL 8750 LED
 CSA C22.2 #137
 CSA C22.2 #213
 55°C Ambient Temperature

2
LAMP CURRENT/LAMP WATTAGE
 06 = 56 Watt (2 ft.)
 07 = 74 Watt (4 ft.)

3
LAMP TYPE
 L2 = LED

4
NOMINAL FIXTURE LENGTH
 2 = Two Foot
 4 = Four Foot

5
VOLTAGE/FREQUENCY
 U = 120 - 277 50/60HZ
 A = 120V 60HZ²
 B = 220 - 240V 50/60HZ²
 C = 277V 60HZ²

6
OPTIONS¹
 TW = End Mounting/Thru Wire Cable Installations Only
 F = Fuse Block²
 TM = Tempered Glass
 EB = Eye Bolt Only
 SP = Increased Surge Protection (10 kV)
 30 = 3000K CCT
 35 = 3500K CCT
 50 = 5000K CCT

¹ Mounting Hardware not included. Please see accessories for mounting selections.

² Specify voltage when option F is needed. When option F is selected, one fuse is provided for 120 and 277V. Two fuses are provided for 220-240V. Fuse option not available for marine listed fixtures, or for fixtures listed for use in Canada.

Catalog logic is for explaining catalog number structure only. Not all combinations are possible; consult factory for catalog numbers not listed in charts.

Certification Guide

Model	Length	Wattage	Operating Voltage	Total Lumens	Lumen per Watt	CRI	CCT	Ambient Temperature	Class I, Div. 2, Group A, B, C & D	Supply Wire Suitable Temp., °C	Hub Size
MAR206L22U	2 ft	56W	120V - 277V 50/60 Hz	5476	98	85	4062	-20°C < Tamb < 55°C	T6	90°C	3/4 in. NPT
MAR207L24U	4 ft	74W	120V - 277V 50/60 Hz	7660	103	82	4071	-20°C < Tamb < 55°C	T6	90°C	3/4 in. NPT

MAR2 LED

Linear LED lighting for hazardous locations

MAR207L24U

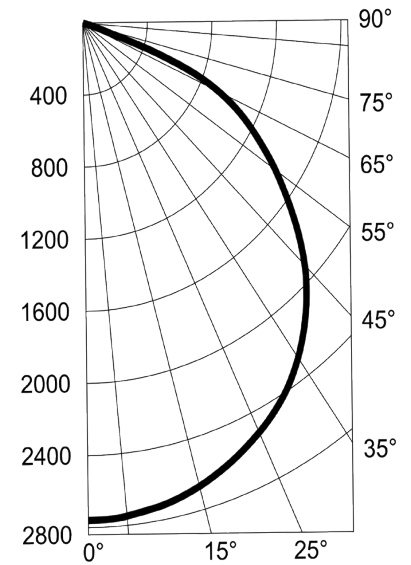
Coefficients of Utilization

% Effective Ceiling Cavity Reflectance rcc	80			50			10		
	50	30	10	50	30	10	50	30	10
% Wall Reflectance rw	50	30	10	50	30	10	50	30	10
Room Cavity Ratio RCR	Effective Floor Cavity Reflectance 20%								
0	119	119	119	111	111	111	102	102	102
1	106	102	98	99	96	94	92	90	88
2	93	86	81	87	82	78	81	78	75
3	82	74	68	77	71	66	72	67	64
4	72	64	57	69	62	56	64	59	55
5	65	56	49	61	54	49	58	52	48
6	58	49	43	55	48	42	52	46	42
7	53	44	38	50	43	38	48	42	37
8	48	40	34	46	39	33	44	38	33
9	44	36	30	42	35	30	40	34	30
10	41	33	27	39	32	27	37	31	27

Candlepower Distribution

Deg.	Parl.	22.5	45	67.5	Norm
0	2760	2760	2760	2760	2760
5	2680	2666	2675	2676	2669
25	2513	2495	2516	2522	2519
35	2261	2248	2286	2295	2285
45	1925	1921	1960	1938	1321
55	1495	1516	1511	1459	1444
65	978	1004	953	941	928
75	409	399	344	17	15
85	34	5	5	4	4
90	0	0	0	0	0

Photometric Data



MAR206L22U

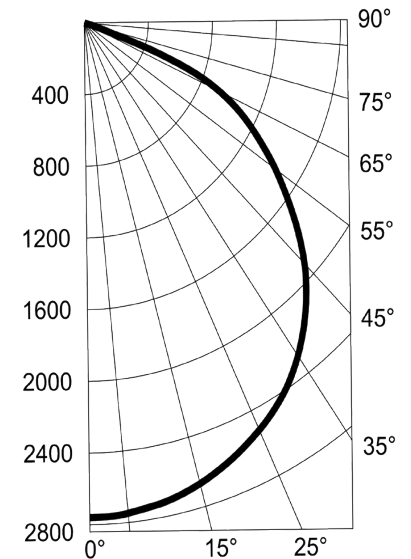
Coefficients of Utilization

% Effective Ceiling Cavity Reflectance rcc	80			50			10		
	50	30	10	50	30	10	50	30	10
% Wall Reflectance rw	50	30	10	50	30	10	50	30	10
Room Cavity Ratio RCR	Effective Floor Cavity Reflectance 20%								
0	119	119	119	111	111	111	102	102	102
1	106	102	99	99	97	94	92	90	89
2	93	87	82	88	83	79	82	78	75
3	82	75	69	78	72	67	73	68	65
4	73	65	58	69	66	57	65	60	56
5	65	57	50	62	55	50	59	53	49
6	59	50	44	56	49	44	53	47	43
7	53	45	39	51	44	39	48	43	38
8	49	40	35	47	40	34	44	38	34
9	45	37	31	43	36	31	41	35	31
10	41	34	28	40	33	28	38	32	28

Candlepower Distribution

Deg.	Parl.	22.5	45	67.5	Norm
0	2068	2068	2068	2068	2068
15	1999	1996	1995	1998	2002
25	1962	1834	1867	1869	1876
35	1661	1666	1673	1669	1669
45	1396	1405	1407	1384	1379
55	1068	1087	1063	1052	1051
65	677	691	682	362	348
75	267	270	142	127	29
85	15	3	4	4	4
90	0	0	0	0	0

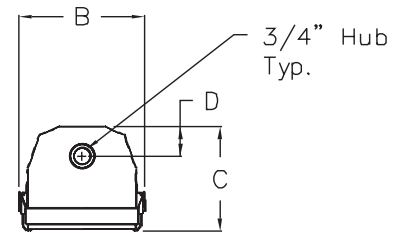
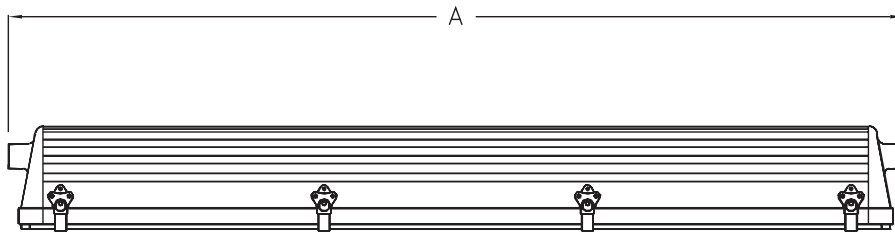
Photometric Data



MAR2 LED

Linear LED lighting for hazardous locations

Fixture Dimensions (inches)



MAR 2 Series	Dimensions (inches)				Boxed Weight	Shipping Volume (Boxed Fixtures)
	A	B	C	D		
4 ft. Models	52.13	7.38	6.19	1.81	36 lbs.	2.0 cu. ft.
2 ft. Models	28.13	7.38	6.19	1.81	26 lbs.	1.0 cu. ft.

Accessories

Straight Mounting Kit

Catalog Number:
53033

Shipping Weight:
5 lbs.



Offset Mounting Kit

Catalog Number:
53032

Shipping Weight:
5 lbs.



Safety Cable

Catalog Number:
10128R

Shipping Weight:
1 lb



Straight Brackets

2 Required

Catalog Number:
26364

Shipping Weight:
2 lbs.



Offset Brackets

2 Required

Catalog Number:
26348

Shipping Weight:
2 lbs.



An Avail Infrastructure Solutions Company

availinfra.com/rig-a-lite

8500 Hansen Road,
Houston, TX 77075
(713) 943-0340