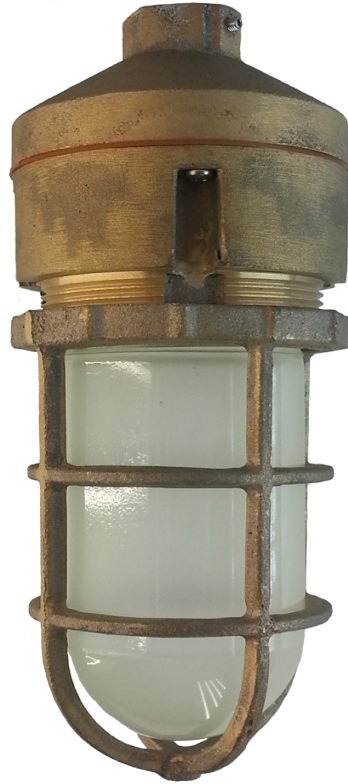


BVP LED

Brass LED globe & guard lighting
for marine environments

RIG-A-LITE™
An Avail Infrastructure Solutions Company



Classifications

- UL 1598A Marine Outside Type
- UL 1598 Wet Locations
- UL 8750 LED Safety
- CUL
- NEMA 4X
- Buy American Act (BAA) Compliant



availinfra.com/rig-a-lite

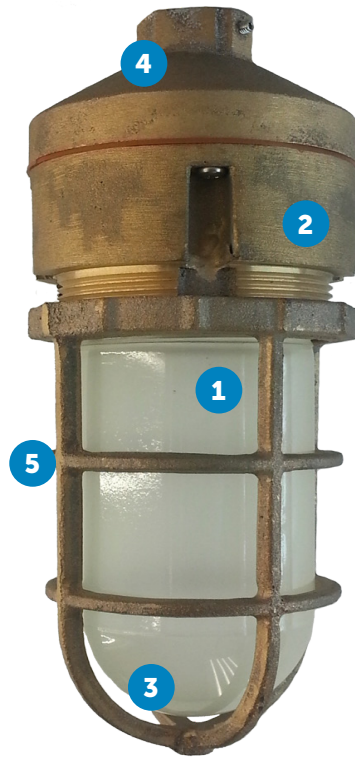
8500 Hansen Road,
Houston, TX 77075
(713) 943-0340

BVP LED

Brass LED globe & guard lighting for marine environments

Key Features

- 1 Compact luminaire with high lumen output
- 2 Rugged 5/32" thick housing
- 3 Glare reducing frosted globe
- 4 Field replaceable LED circuit boards and drivers
- 5 Protective guard



Additional Features

- Ceiling, pendant and wall-mounting options
- No external fins
- Optional dimming driver
- Standard 2kV surge protection
- 5-year warranty

Standard Materials

Body:

Marine Brass

Guard:

Marine Brass

Gaskets:

One-Piece Silicone

Lens:

Borosilicate Glass

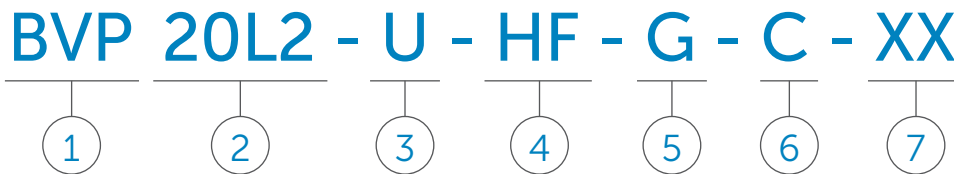
Hardware:

Stainless Steel

BVP LED

Brass LED globe & guard lighting for marine environments

Catalog Number Logic



1
SERIES
BVP

2
LAMP WATTAGE & TYPE
20LW = 20 Watt LED (4000K)

3
BALLAST VOLTAGE
U = 120-277V 50/60 HZ

4
GLOBE
HF = Heat Resistant Frosted Glass Globe
HRG = Heat Resistant Green Glass Globe
HRA = Heat Resistant Amber Glass Globe
HRB = Heat Resistant Blue Glass Globe
HRR = Heat Resistant Red Glass Globe

5
GUARD (Required)
G = Guard

6
MOUNTING STYLE
P = Pendant
W = Wall Mount with Box
C = Ceiling

7
OPTIONS
30 = 3000K (CCT)
35 = 3500K (CCT)
50 = 50000 (CCT)
E1 = 1/2" NPT Dead End
(single hole in any location)
E2 = 3/4" NPT Dead End
(single hole in any location)
C1 = 1/2" NPT Thru Feed
(two holes on opposite sides)*
C2 = 3/4" NPT Thru Feed
(two holes on opposite sides)*
L1 = 1/2" NPT 90° (two holes at 90° angle)*
L2 = 3/4" NPT 90° (two holes at 90° angle)*
X1 = 1/2" NPT X (all four hubs drilled)*
X2 = 3/4" NPT X (all four hubs drilled)*

** Ceiling and Wall Mount Only*

Catalog logic is for explaining catalog number structure only. Not all combinations are possible; consult factory for catalog numbers not listed in charts.




Certification Guide

Model	Mount	Wattage	Operating Voltage	Total Lumens	Lumens per Watt	CRI	CCT	Ambient Temperature	Supply Wire Suitable Temp. °C
BVP20L2LUHFG	P, C, W	20W	120V - 277V 50/60 Hz,	1769	87	83	4017	-20°C < Tamb < 25°C	90°C


BVP LED


Brass LED globe & guard lighting for marine environments

Mounting

Mounting Style	Catalog Number		Shipping Weight (lbs.)
	Marine UL 1598A, UL 1598	Wet Locations UL1598	
Pendant Mount 	BVP20-L2-U-HF-G-P	BVPD20-L2-U-HF-G-P	7.5
Ceiling Mount 	BVP20-L2-U-HF-G-C	BVPD20-L2-U-HF-G-C	8.3
Wall Mount 	BVP20-L2-U-HF-G-W	BVPD20-L2-U-HF-G-W	14.5

Accessories

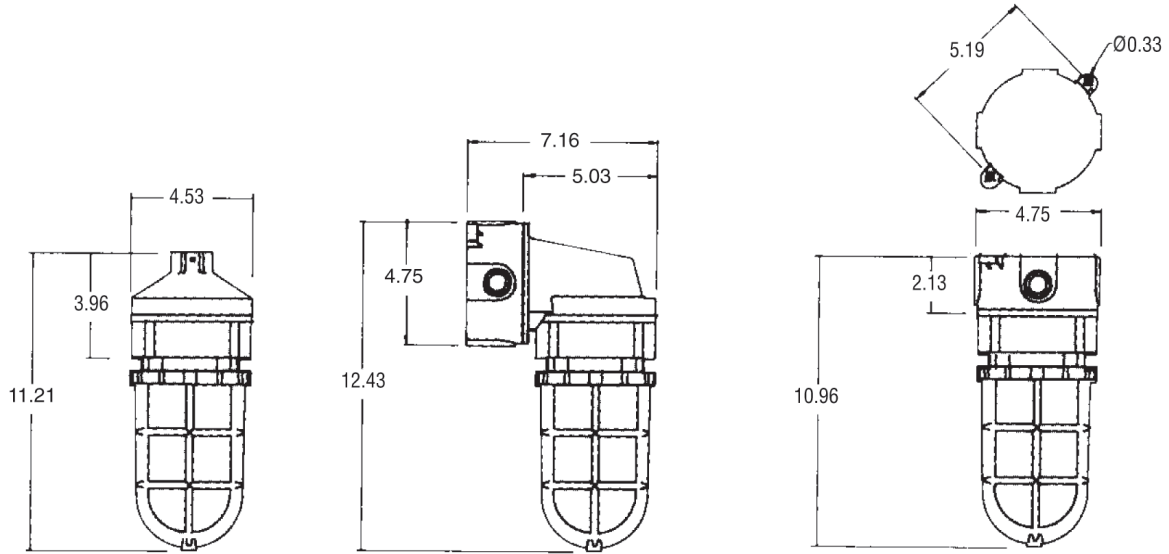
Globes	Type	Color	Thread Diameter	Catalog Number
	Heat Resistant Tempered Glass	Frosted	3-5/16 in.	VGL100HRFRSTD

Guard	Description	Catalog Number
	Cast Brass Guard	59030BR

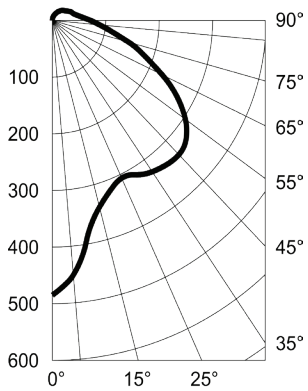
BVP LED

Brass LED globe & guard lighting for marine environments

Fixture Dimensions (inches)



Photometric Data



An Avail Infrastructure Solutions Company

availinfra.com/rig-a-lite

8500 Hansen Road,
Houston, TX 77075
(713) 943-0340