

AVPH LED

LED globe & guard lighting
for hazardous locations

RIG-A-LITE™
An Avail Infrastructure Solutions Company



Classifications

- Class I, Division 2, Groups A, B, C & D
- Zone 2, Groups IIA, IIB & IIC
- UL 844 Hazardous Locations
- UL 1598A Marine Outside Type
- UL 1598 Wet Locations
- UL 8750 LED Safety
- CSA C22.2 #250.0-08
- CSA C22.2 #137-M1981
- NEMA 4X
- Tested to LM79 & LM80
- Buy American Act (BAA) Compliant



availinfra.com/rig-a-lite

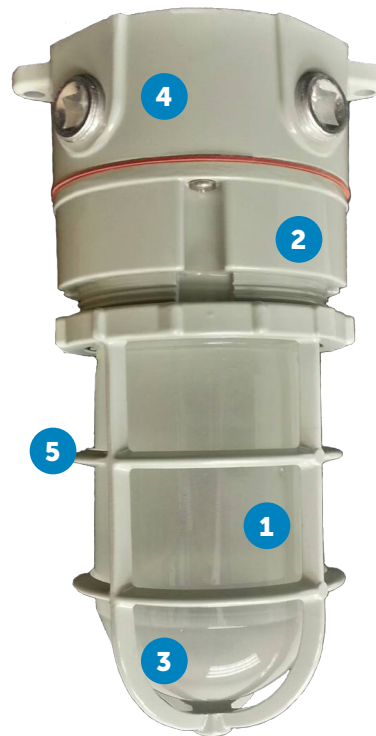
8500 Hansen Road,
Houston, TX 77075
(713) 943-0340

AVPH LED

LED globe & guard lighting for hazardous locations

Key Features

- 1 High lumen output in a compact luminaire
- 2 Rugged 5/32" thick housing
- 3 Glare-reducing frosted globe
- 4 Field replaceable LED circuit boards and drivers
- 5 Protective guard



Additional Features

- Ceiling, pendant and wall-mounting options
- No external fins
- Optional dimming driver
- Standard 2kV surge protection
- 5-year warranty

Standard Materials

Body:

A360 Aluminum (less than .4% copper content)
with baked-on gray epoxy finish

Guard:

A360 Aluminum (less than .4% copper content)
with baked-on gray epoxy finish

Gaskets:

One-Piece Silicone

Lens:

Borosilicate Glass

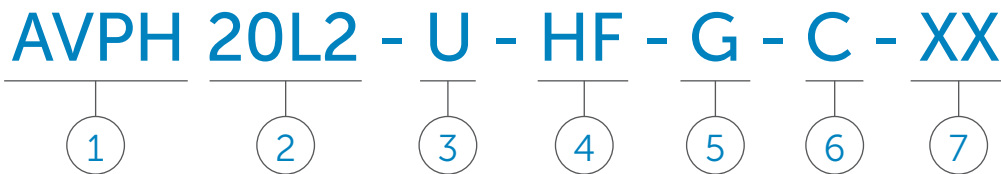
Hardware:

Stainless Steel

AVPH LED

LED globe & guard lighting for hazardous locations

Catalog Number Logic



1
SERIES
AVPH

2
LAMP WATTAGE & TYPE
20L2 = 20 Watt LED (4000K CCT)

3
BALLAST VOLTAGE
U = 120-277V 50/60 HZ

4
GLOBE
HF = Heat Resistant Frosted Glass Globe
HRG = Heat Resistant Green Glass Globe
HRA = Heat Resistant Amber Glass Globe
HRB = Heat Resistant Blue Glass Globe
HRR = Heat Resistant Red Glass Globe

5
GUARD
G = Guard

6
MOUNTING STYLE
P = Pendant
W = Wall Mount with Box
C = Ceiling

7
OPTIONS
30 = 3000K (CCT)
35 = 3500K (CCT)
50 = 5000K (CCT)




Certification Guide

Model	Mount	Wattage	Operating Voltage	Total Lumens	Lumens per Watt	CRI	CCT	Ambient Temperature	Class I, Div.2, Group A, B, C, D	Supply Wire Suitable Temp, °C
AVPH20L2UHF	P, C, W	20W	120V - 277V 50/60 Hz,	1769	87	83	4017	-20°C < Tamb < 50°C	T2D	90°C



AVPH LED

LED globe & guard lighting for hazardous locations

Mounting

Mounting Style	Catalog Number	Shipping Weight (lbs.)
	Marine UL 844, UL 1598A, UL 1598	
Pendant Mount 	AVPH20-L2-U-HF-G-P	4.1
Ceiling Mount 	AVPH20-L2-U-HF-G-C	4.7
Wall Mount 	AVPH20-L2-U-HF-G-W	5.4

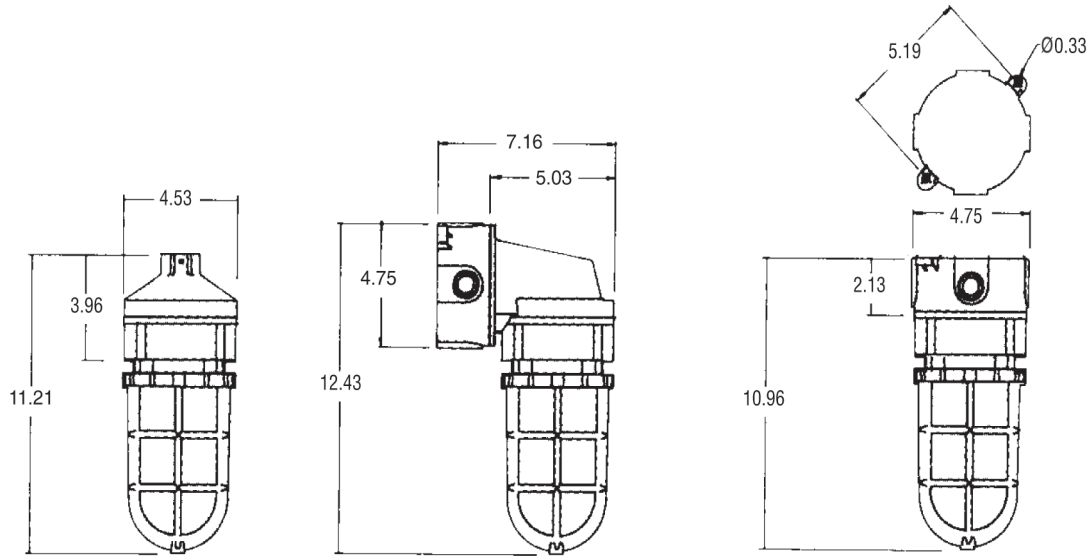
Accessories

Globe	Type	Color	Thread Diameter	Catalog Number	Guard	Description	Catalog Number
	Heat Resistant Tempered Glass	Frosted	3-5/16 in.	VGL100HRFRSTD		Cast Aluminum Guard	59030AMPG

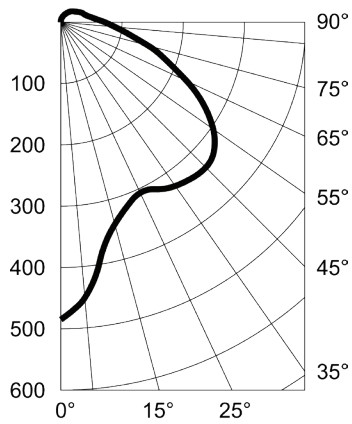
AVPH LED

LED globe & guard lighting for hazardous locations

Fixture Dimensions (inches)



Photometric Data



availinfra.com/rig-a-lite

8500 Hansen Road,
Houston, TX 77075
(713) 943-0340