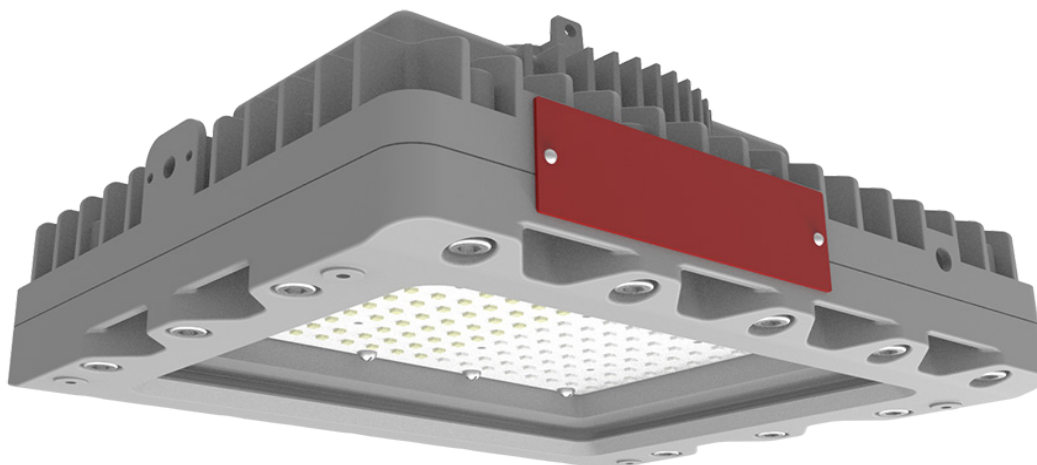


EHSM LED

Explosion proof LED low-bay area lighting
for hazardous-rated environments

RIG-A-LITE™
An Avail Infrastructure Solutions Company



E-SERIES

Cost-effective, energy-efficient lighting for demanding environments

The RIG-A-LITE E-Series provides economical lighting solutions for industrial and hazardous applications, offering reliable performance and durability.

Classifications

- Class I, Division I, Groups B, C & D
- Class I, Division 2, Groups A, B, C, & D
- Class II, Divisions 1 & 2, Groups E, F & G
- Class III
- Class I, Zone 1, Group IIB+H2
- Class I, Zone 2, Group IIC
- Zone 21, Zone 22
- UL 844 Hazardous Locations
- UL 1598 Wet Locations
- UL 1598A Marine Outside Type
- UL 8750 LED Safety
- CSA C22.2 No. 137-M1981
- CSA C22.2 No. 250.0
- NEMA 4X
- IP67
- IK09
- 5G
- Tested to 1000 hrs salt spray to standard ASTM "B117-11"



availinfra.com/rig-a-lite

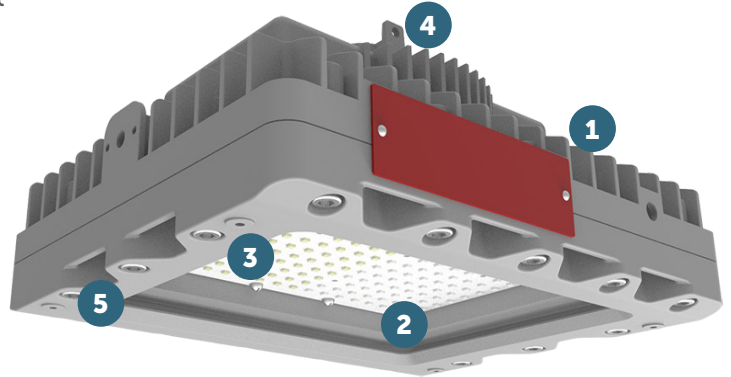
8500 Hansen Road
Houston, TX 77075
(713) 943-0340

EHSM LED

Explosion proof LED low-bay area lighting for hazardous-rated environments

Key Features

- 1 Lightweight and Compact - Low profile & lightweight with single chamber design
- 2 High efficiency - Delivers up to 160lm/W utilizing specially-treated glass for extreme application
- 3 Multiple Beam Angles - 35°, 60°, 90°, 110°, T2, T3, T4 lenses provide more choices for various scenarios
- 4 Retrofit Friendly - Universal mounting accessories minimize the SKUs and maximize the flexibility
- 5 Built to Last - Copper-free aluminum housing and impact resistant lens provide ingress protection



Additional Features

- Universal voltage: AC120-277, 347-480V (50/60Hz)
- Optional self-testing emergency battery backup
- High efficacy up to 160lm/W
- Optics: 30° / 60° / 90° / 110° / T1 / T3 / T4
- 10kV surge protector is standard, 20kV optional
- Dimming: Standard 1-10VDC
- T-rating of T6
- Ambient operating temperature -40°C to 65°C
- Lumen maintenance 150,000 @ L70
- 5-year warranty

Standard Materials

Body:

Housing, heat sink, and adapter are die-cast aluminum with baked powder epoxy/polyester finish

Gaskets:

High temperature resistant silicone

Lens:

Heat, shock, and impact resistant glass

Hardware:

Stainless Steel with lacquer-free nameplate

EHSM LED

Explosion proof LED low-bay area lighting for hazardous-rated environments

Catalog Number Logic



1

BASIC LUMINAIRE

EHSM = N. American Standards

2

LUMENS/WATTS

03 = 3,200 Lumens / 20 Watts

06 = 6,400 Lumens / 40 Watts

10 = 9,600 Lumens / 60 Watts

3

VOLTAGE

U = 100-277V 50/60HZ

N = 347-480V 60HZ

4

EXPLOSION-PROOF LEVEL

1 = C1D1, C2D1

2 = C1D2, C2D1

5

OPTICS

30 = 30°

60 = 60°

90 = 90°

110 = 110°

T2 = Type II

T3 = Type III

T4 = Type IV

6

COLOR TEMPERATURE

WW = 2700K (Warm white)

SW = 3000K (Soft white)

NW = 4000K (Neutral white)

CW = 5000K (Cool white)

AM = Amber

7

LENS

TG = Transparent Glass

FG = Frosted Glass

8

MOUNTING STYLE

PD = Pendant mount (3/4" NPT)

TB2 = Trunnion bracket (3/4" NPT)

CJB = Ceiling junction box

W90 = Wall mount 90°

W25 = Wall mount 25°

PS = Pole stanchion

S90A = Stanchion-90° (1-1/4" NPT)

S90B = Stanchion-90° (1-1/2" NPT)

S25A = Stanchion-25° (1-1/4" NPT)

S25B = Stanchion-25° (1-1/2" NPT)

9

COLOR

GR = Gray

10

OPTIONS

WGS2 = Wire guard

SC2 = Safety cable

VS2 = Dark sky visor

SP10U = 10KV surge protector
(100-277V) * Standard

SP10N = 10KV surge protector
(347-480V) * Standard

SP20U = 20KV surge protector
(100-277V)

SP20N = 20KV surge protector
(347-480V)

PBC48 = Pipe clamp (M8*48mm) for pole
1-7/8" (48mm)

PBC60 = Pipe clamp (M8*60mm) for pole
2-3/8" (60mm)

PS = Pole stanchion 2-3/8" (60mm)

EHSM LED

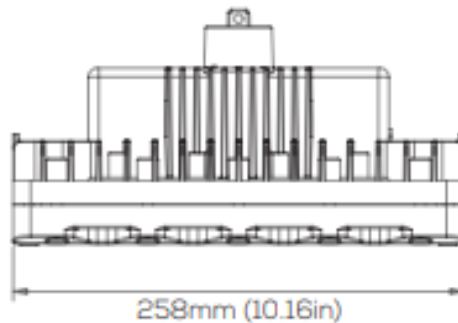
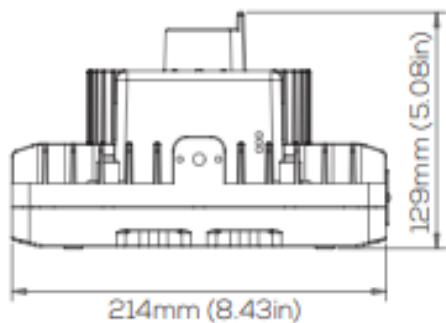
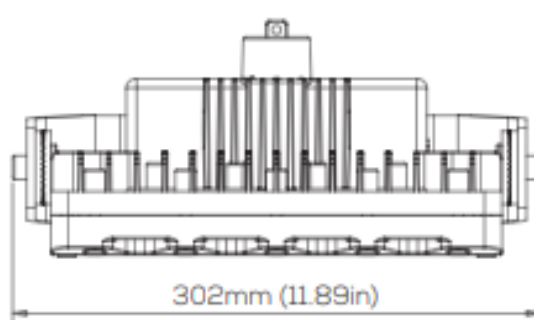
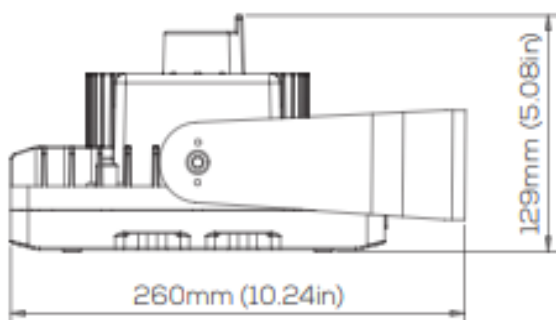
Explosion proof LED low-bay area lighting for hazardous-rated environments

Certification Guide

Model	Watts	Operating Voltage	Total Lumens ¹	Lumens per Watt ¹	CRI ¹	CCT ¹	Ambient Temperature ^{1,2}	Class I, Div. 1, Group C & D	Class I, Div. 2, Group A, B, C & D	Class II, Div. 1, Group E, F, G, Class III	Supply Wire Suitable Temperature, °C
EHSM03	20W	100-277V 50/60HZ	3200	160.0	70	5000K	-40°C < Tamb < 65°C	T6	T4A	T4A	90°C
EHSM06	40W	100-277V 50/60HZ	6400	160.0	70	5000K	-40°C < Tamb < 65°C	T6	T4A	T4A	90°C
EHSM10	60W	100-277V 50/60HZ, 347/480V 60HZ	9600	160.0	70	5000K	-40°C < Tamb < 65°C	T6	T4A	T4A	90°C

1. When FG or optics options are selected, total lumens, lumens per watt, CRI, CCT or ambient temperature may change. Consult factory for values.

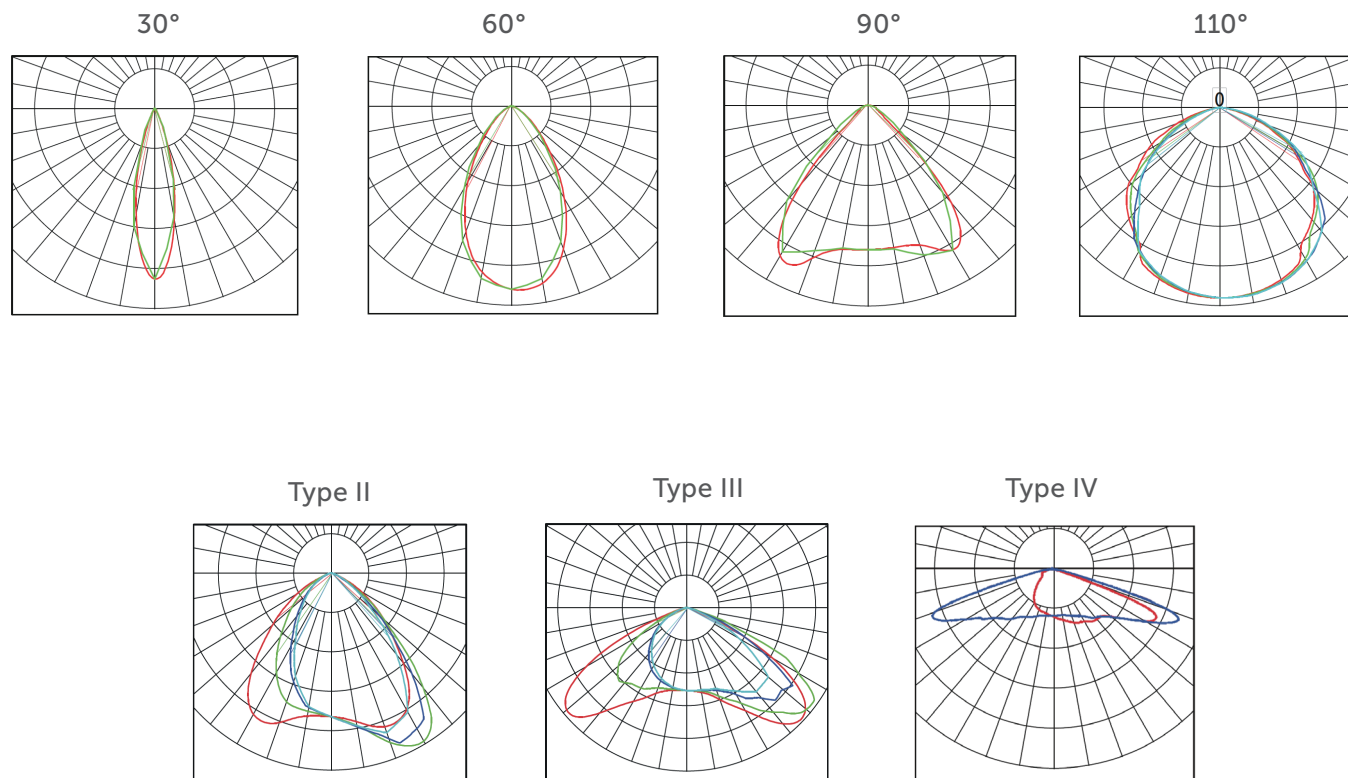
Fixture Dimensions (inches)



EHSM LED

Explosion proof LED low-bay area lighting for hazardous-rated environments

Photometric Data

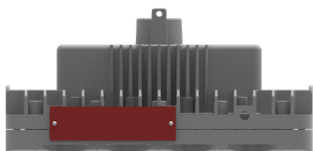


EHSM LED

Explosion proof LED low-bay area lighting for hazardous-rated environments

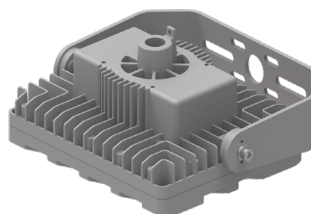
Mounting Options

Pendant Mount: PD - 3/4" NPT



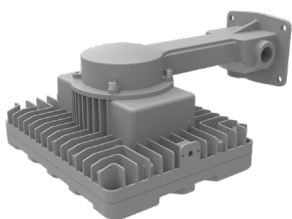
Fixture	Weight
EHSM03	12.13 lbs.
EHSM06	12.13 lbs.
EHSM10	12.13 lbs.

Trunnion Bracket: TB2 3/4" NPT



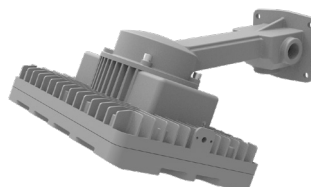
Fixture	Weight
EHSM03	14.55 lbs.
EHSM06	14.55 lbs.
EHSM10	14.55 lbs.

90° Wall Mount: W90 - 3/4" NPT



Fixture	Weight
EHSM03	15.21 lbs.
EHSM06	15.21 lbs.
EHSM10	15.21 lbs.

25° Wall Mount - W25 - 3/4" NPT



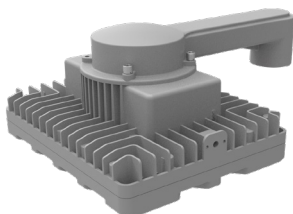
Fixture	Weight
EHSM03	15.21 lbs.
EHSM06	15.21 lbs.
EHSM10	15.21 lbs.

EHSM LED

Explosion proof LED low-bay area lighting for hazardous-rated environments

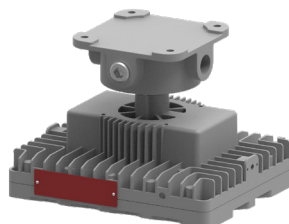
Mounting Options (continued)

90° Stanchion Mount



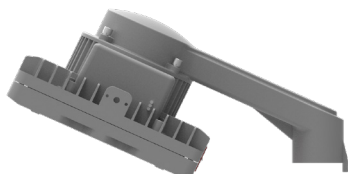
Fixture	Weight
EHSM03	14.11 lbs.
EHSM06	14.11 lbs.
EHSM10	14.11 lbs.

Junction Box



Fixture	Weight
EHSM03	14.33 lbs.
EHSM06	14.33 lbs.
EHSM10	14.33 lbs.

25° Stanchion Mount












Fixture	Weight
EHSM03	14.11 lbs.
EHSM06	14.11 lbs.
EHSM10	14.11 lbs.

EHSM LED

Explosion proof LED low-bay area lighting for hazardous-rated environments

Accessories

	Catalog No.	Size (in.)	Shipping Weight (lbs.)
Trunnion Bracket 	TB2	11.27" x 6.9" x 2.36"	2.43 lbs.
Stainless Steel Wire Guard 	WGS2	9.89" x 6.11" x 0.24"	0.22 lbs.
Stainless Steel Safety Cable 	SC2	39.4"	0.15 lbs.
Stainless Steel Dark Sky Visor 	VS2	9.93" x 6.62" x 3.15"	0.66 lbs.
Pipe Clamp for 1-7/8" Pole 	PBC48	0.32" x 1.89"	0.35 lbs.
Pipe Clamp for 2-3/8" Pole 	PBC60	0.32" x 2.36"	0.44 lbs.
Pole Stanchion 	PS	2.36"	5.51 lbs.

	Catalog No.	Size (in.)	Shipping Weight (lbs.)
10KV Surge Protector  * Standard	SP10U 10KV (100-277V)	4.18" x 0.91" x 0.51"	0.09 lbs.
	SP10N 10KV (347-480V)	4.33" x 0.99" x 0.71"	0.11 lbs.
20KV Surge Protector 	SP20U 20KV (100-277V)	4.41" x 1.1" x 0.59"	0.12 lbs.
	SP20N 20KV (347-480V)	4.33" x 1.18" x 0.71"	0.15 lbs.



availinfra.com/rig-a-lite

8500 Hansen Road
Houston, TX 77075
(713) 943-0340