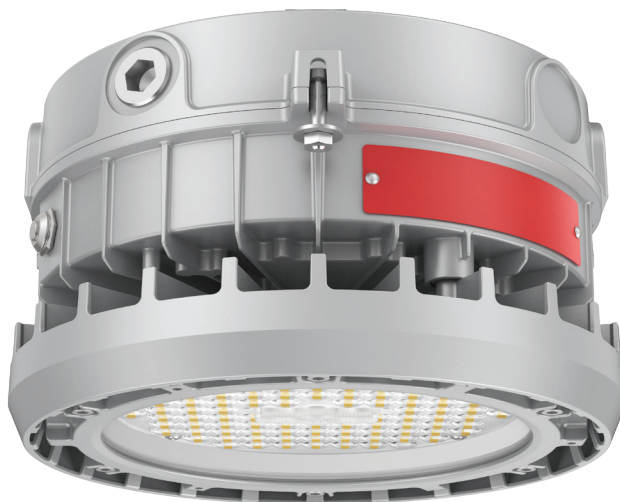


EXA10 LED

Explosion-proof LED low-bay/jelly jar luminaire for hazardous-rated locations

RIG-A-LITE™
An Avail Infrastructure Solutions Company



EX-SERIES

Globally certified protection for hazardous environments

The RIG-A-LITE EX-Series meets IECEx and ATEX standards, providing compliance, durability, and safety for hazardous locations. Designed for the Middle East, North Africa, Southeast Asia, and other ATEX/IECEx-certified regions, the EX-Series delivers reliable performance in extreme conditions.

Classifications

- Zone 2
- Zone 21, 22
- IK08
- IP66

IECEx

- Ex nR IIC T6/T5 Gc
- Ex tb IIIC T80 C/T95 C Db IP66

ATEX

- II 3G Ex nR IIC T6/T5 Gc
- II 2D Ex tb IIIC T80 C/T95 C Db IP66



availinfra.com/rig-a-lite

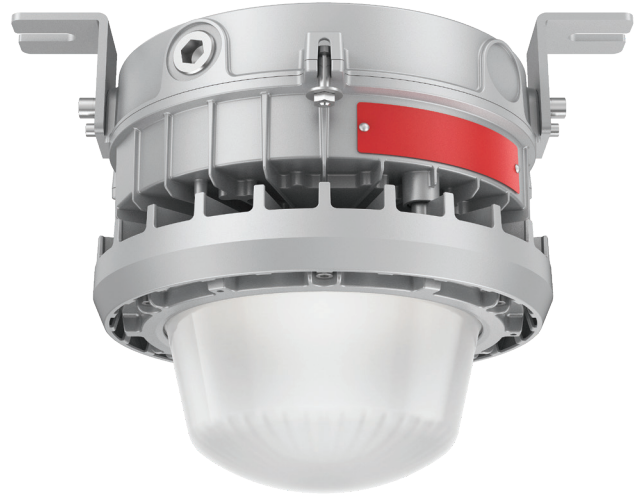
8500 Hansen Road
Houston, TX 77075
(713) 943-0340

EXA10 LED

Explosion-proof LED low-bay/jelly jar luminaire for hazardous-rated locations

Key Features

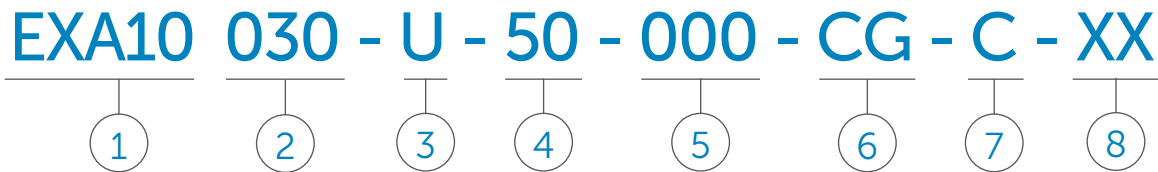
- Available in 30W, 40W, 50W, 60W, and 75W options, with a maximum luminous efficiency of 160 Lm/W
- Warm white to cool white (2000K-6500K) and colored LEDs (R/G/A) are available
- Type I, III, 60° and 90° light distribution options
- Special optical design with curved glass allows for upward light distribution greater than 8%
- Features a dip switch for power adjustment
- Optional protective wire guard, safety cables, cone top, and fuse are available
- Available configurations include emergency, dimming, and emergency dimming
- Multiple installation options to meet different needs: ceiling pendant, wall, pole, or trunnion mount
- Dimming methods include 1-10V and 0-10V



EXA10 LED

Explosion-proof LED low-bay/jelly jar luminaire for hazardous-rated locations

Catalog Number Logic



1

BASIC LUMINAIRE

EXA10 = ATEX & IECEx Standards

2

LUMENS/WATTS

030 = 4,200 Lumens / 30 Watts
040 = 5,600 Lumens / 40 Watts
050 = 7,000 Lumens / 50 Watts
060 = 8,400 Lumens / 60 Watts
075 = 10,500 Lumens / 75 Watts

3

VOLTAGE

U = 120-277V 50/60HZ
D = 18-48Vdc
D2 = 190-315Vdc

4

COLOR TEMPERATURE

20 = 2000K (Warm white)
30 = 3000K (Soft white)
40 = 4000K (Natural white)
50 = 5000K (Cool white)
65 = 6500K (Cool daylight)
RE = Red
GR = Green
BL = Blue
AM = Amber

5

OPTICS

022 = 60° Beam angle
023 = 90° Beam angle
000 = 120° Beam angle
020 = Type I
021 = Type III

6

LENS

CG = Flat Clear Glass
GG = Curved grille glass

7

MOUNTING STYLE

P = Pendant mount
T = Trunnion mount
C = Ceiling mount
W = Wall mount
S = 25° Stanchion mount
X = 30° Stanchion mount
V = 90° Stanchion mount

8

OPTIONS

WG = Wire guard
EM = Emergency battery
DM = Dimmable
ED = Emergency battery & dimmable
AP = Adjustable power
CT = Cone top

EXA10 LED

Explosion-proof LED low-bay/jelly jar luminaire for hazardous-rated locations

Certification Guide

Model	Watts	Operating Voltage	Total Lumens ¹	Lumens per Watt ¹	CRI ¹	CCT ¹	Ambient Temperature ¹	Gas ExnR	Dust Extb	Supply Wire Suitable Temperature, °C
EXA10-030	30W	120-277V 50/60HZ, 18-48Vdc, 190-315Vdc	4200	140.0	70	5000K	-40°C < Tamb < 65°C	T5	95°C	90°C
EXA10-030-EM	30W	120-277V 50/60HZ	4200	140.0	70	5000K	0°C < Tamb < 50°C	T6	80°C	90°C
EXA10-040	40W	120-277V 50/60HZ, 18-48Vdc, 190-315Vdc	5600	140.0	70	5000K	-40°C < Tamb < 65°C	T5	95°C	90°C
EXA10-040-EM	40W	120-277V 50/60HZ	5600	140.0	70	5000K	0°C < Tamb < 50°C	T6	80°C	90°C
EXA10-050	50W	120-277V 50/60HZ, 18-48Vdc, 190-315Vdc	7000	140.0	70	5000K	-40°C < Tamb < 65°C	T5	95°C	90°C
EXA10-050-EM	50W	120-277V 50/60HZ	7000	140.0	70	5000K	0°C < Tamb < 50°C	T6	80°C	90°C
EXA10-050-AP	20W/35W/50W	120-277V 50/60HZ	7000	140.0	70	5000K	-40°C < Tamb < 65°C	T5	95°C	90°C
EXA10-050-AP-EM	20W/35W/50W	120-277V 50/60HZ	7000	140.0	70	5000K	0°C < Tamb < 50°C	T6	80°C	90°C
EXA10-060	60W	120-277V 50/60HZ, 18-48Vdc, 190-315Vdc	8400	140.0	70	5000K	-40°C < Tamb < 60°C	T5	95°C	90°C
EXA10-060-EM	60W	120-277V 50/60HZ	8400	140.0	70	5000K	0°C < Tamb < 50°C	T5	95°C	90°C
EXA10-075	75W	120-277V 50/60HZ, 18-48Vdc, 190-315Vdc	10500	140.0	70	5000K	-40°C < Tamb < 60°C	T5	95°C	90°C
EXA10-075-EM	75W	120-277V 50/60HZ	10500	140.0	70	5000K	0°C < Tamb < 50°C	T5	95°C	90°C
EXA10-075-AP	30W/53W/75W	120-277V 50/60HZ	10500	140.0	70	5000K	-40°C < Tamb < 60°C	T5	95°C	90°C
EXA10-075-AP-EM	30W/53W/75W	120-277V 50/60HZ	10500	140.0	70	5000K	0°C < Tamb < 50°C	T5	95°C	90°C

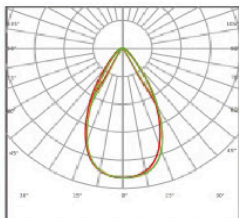
¹ When GS, WG, color LEDs or optics options are selected, total lumens, lumens per watt, CRI, CCT, or ambient temperature may change. Consult factory for values.

EXA10 LED

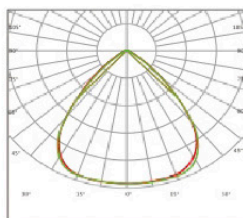
Explosion-proof LED low-bay/jelly jar luminaire for hazardous-rated locations

Photometric Data

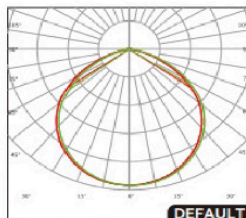
60°



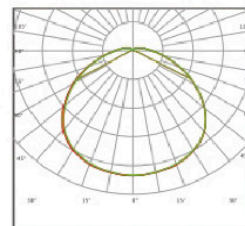
90°



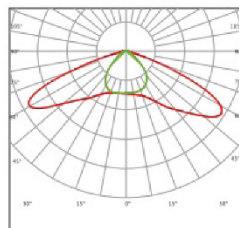
120° (Flat Glass)



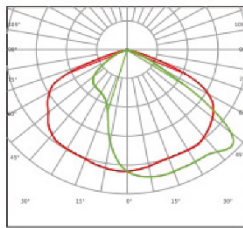
120° (Curved Glass)



Type I



Type III

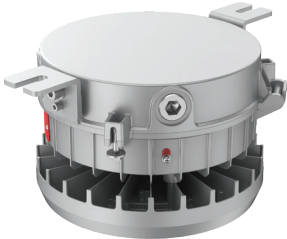


EXA10 LED

Explosion-proof LED low-bay/jelly jar luminaire for hazardous-rated locations

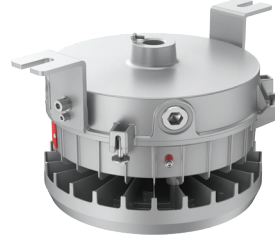
Mounting Options

Ceiling Mount: C1



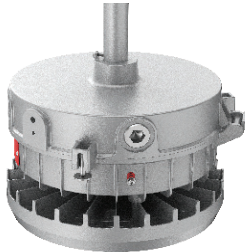
Fixture	Weight
EXA10-030	11.2 lbs.
EXA10-040	11.2 lbs.
EXA10-050	11.2 lbs.
EXA10-060	11.2 lbs.
EXA10-075	11.2 lbs.

Ceiling Mount: C2



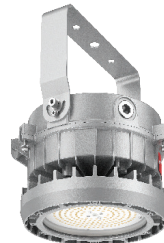
Fixture	Weight
EXA10-030	11.2 lbs.
EXA10-040	11.2 lbs.
EXA10-050	11.2 lbs.
EXA10-060	11.2 lbs.
EXA10-075	11.2 lbs.

Pendant Mount: P



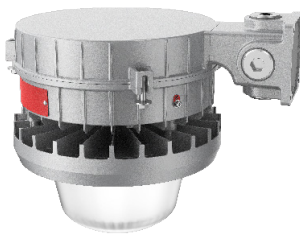
Fixture	Weight
EXA10-030	10.1 lbs.
EXA10-040	10.1 lbs.
EXA10-050	10.1 lbs.
EXA10-060	10.1 lbs.
EXA10-075	10.1 lbs.

Trunnion Mount: T



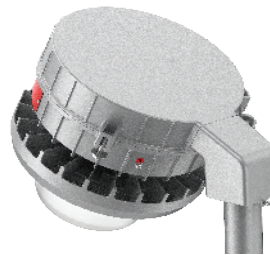
Fixture	Weight
EXA10-030	11.7 lbs.
EXA10-040	11.7 lbs.
EXA10-050	11.7 lbs.
EXA10-060	11.7 lbs.
EXA10-075	11.7 lbs.

Wall Mount: W



Fixture	Weight
EXA10-030	14.7 lbs.
EXA10-040	14.7 lbs.
EXA10-050	14.7 lbs.
EXA10-060	14.7 lbs.
EXA10-075	14.7 lbs.

25° Stanchion Mount: S



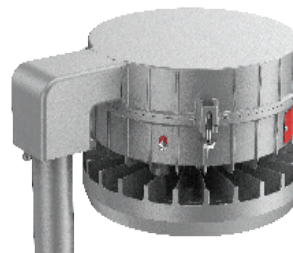
Fixture	Weight
EXA10-030	13.4 lbs.
EXA10-040	13.4 lbs.
EXA10-050	13.4 lbs.
EXA10-060	13.4 lbs.
EXA10-075	13.4 lbs.

30° Stanchion Mount: X



Fixture	Weight
EXA10-030	13.6 lbs.
EXA10-040	13.6 lbs.
EXA10-050	13.6 lbs.
EXA10-060	13.6 lbs.
EXA10-075	13.6 lbs.

90° Stanchion Mount: V


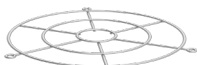




Fixture	Weight
EXA10-030	13.6 lbs.
EXA10-040	13.6 lbs.
EXA10-050	13.6 lbs.
EXA10-060	13.6 lbs.
EXA10-075	13.6 lbs.

EXA10 LED

Explosion-proof LED low-bay/jelly jar luminaire for hazardous-rated locations

Accessories

	Catalog No.	Size (in.)	Shipping Weight (lbs.)
Cone Top 	AD-EXA10-01	21.65" x 12.6"	1.1 lbs
Wire Guard (flat glass) 	BC-EXA10-01	18.5" x 0.44"	0.9 lbs
Wire Guard (curved glass) 	BC-EXA10-02	18.5" x 17.72" x 11.42"	1 lb
Safety Cable 	SL-EXA10-01	12.99"	0.2 lbs



availinfra.com/rig-a-lite

8500 Hansen Road
Houston, TX 77075
(713) 943-0340