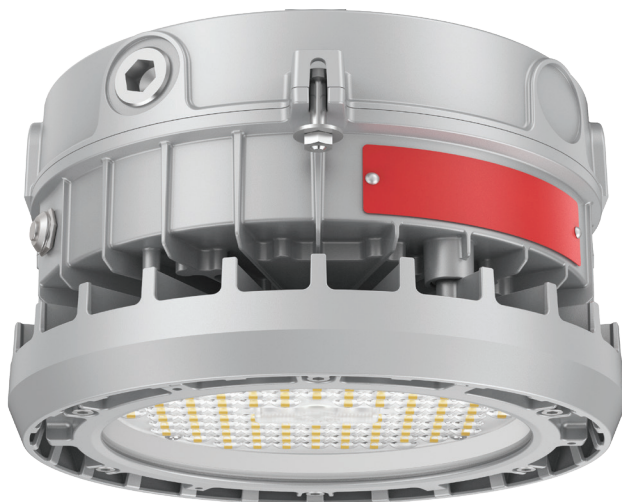


# EXA10 LED

Explosion-proof LED low-bay/jelly jar luminaire for hazardous-rated locations

**RIG-A-LITE™**  
An Avail Infrastructure Solutions Company



## EX-SERIES

### Globally certified protection for hazardous environments

The RIG-A-LITE EX-Series meets IECEx and ATEX standards, providing compliance, durability, and safety for hazardous locations. Designed for the Middle East, North Africa, Southeast Asia, and other ATEX/IECEx-certified regions, the EX-Series delivers reliable performance in extreme conditions.

#### Classifications

- Zone 2
- Zone 21, 22
- IK08
- IP66

#### IECEx

- Ex nR IIC T6/T5 Gc
- Ex tb IIIC T80 C/T95 C Db IP66

#### ATEX

- II 3G Ex nR IIC T6/T5 Gc
- II 2D Ex tb IIIC T80 C/T95 C Db IP66



[availinfra.com/rig-a-lite](http://availinfra.com/rig-a-lite)

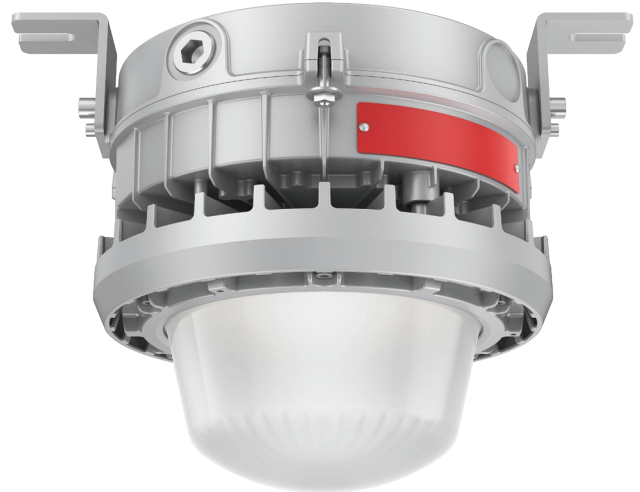
8500 Hansen Road  
Houston, TX 77075  
(713) 943-0340

## EXA10 LED

Explosion-proof LED low-bay/jelly jar luminaire for hazardous-rated locations

### Key Features

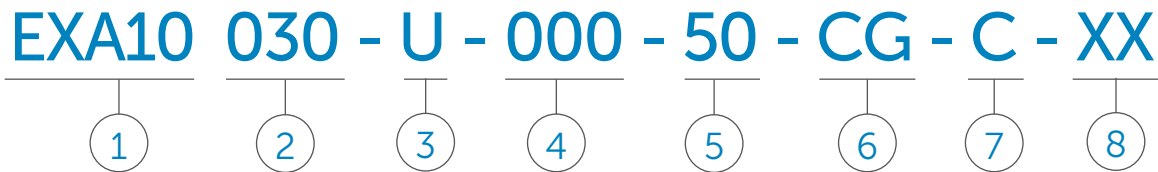
- Available in 30W, 40W, 50W, 60W, and 75W options, with a maximum luminous efficiency of 160 Lm/W
- Warm white to cool white (2000K-6500K) and colored LEDs (R/G/A) are available
- Type I, III, 60° and 90° light distribution options
- Special optical design with curved glass allows for upward light distribution greater than 8%
- Features a dip switch for power adjustment
- Optional protective wire guard, safety cables, cone top, and fuse are available
- Available configurations include emergency, dimming, and emergency dimming
- Multiple installation options to meet different needs: ceiling pendant, wall, pole, or trunnion mount
- Dimming methods include 1-10V and 0-10V



# EXA10 LED

Explosion-proof LED low-bay/jelly jar luminaire for hazardous-rated locations

## Catalog Number Logic



### 1

#### BASIC LUMINAIRE

EXA10 = ATEX & IECEx Standards

### 2

#### LUMENS/WATTS

030 = 4,200 Lumens / 30 Watts  
040 = 5,600 Lumens / 40 Watts  
050 = 7,000 Lumens / 50 Watts  
060 = 8,400 Lumens / 60 Watts  
075 = 10,500 Lumens / 75 Watts

### 3

#### VOLTAGE

U = 120-277V 50/60HZ  
D = 18-48Vdc  
D2 = 190-315Vdc

### 4

#### OPTICS

022 = 60° Beam angle  
023 = 90° Beam angle  
000 = 120° Beam angle  
020 = Type I  
021 = Type III

### 5

#### COLOR TEMPERATURE

20 = 2000K (Warm white)  
30 = 3000K (Soft white)  
40 = 4000K (Natural white)  
50 = 5000K (Cool white)  
65 = 6500K (Cool daylight)  
RE = Red  
GR = Green  
BL = Blue  
AM = Amber

### 6

#### LENS

CG = Flat Clear Glass  
GG = Curved grille glass

### 7

#### MOUNTING STYLE

P = Pendant mount  
T = Trunnion mount  
C = Ceiling mount  
W = Wall mount  
S = 25° Stanchion mount  
X = 30° Stanchion mount  
V = 90° Stanchion mount

### 8

#### OPTIONS

WG = Wire guard  
EM = Emergency battery  
DM = Dimmable  
ED = Emergency battery & dimmable  
AP = Adjustable power  
CT = Cone top

# EXA10 LED

Explosion-proof LED low-bay/jelly jar luminaire for hazardous-rated locations

## Certification Guide

Model	Watts	Operating Voltage	Total Lumens <sup>1</sup>	Lumens per Watt <sup>1</sup>	CRI <sup>1</sup>	CCT <sup>1</sup>	Ambient Temperature <sup>1</sup>	Gas ExnR	Dust Extb	Supply Wire Suitable Temperature, °C
EXA10-030	30W	120-277V 50/60HZ, 18-48Vdc, 190-315Vdc	4200	140.0	70	5000K	-40°C < Tamb < 65°C	T5	95°C	90°C
EXA10-030-EM	30W	120-277V 50/60HZ	4200	140.0	70	5000K	0°C < Tamb < 50°C	T6	80°C	90°C
EXA10-040	40W	120-277V 50/60HZ, 18-48Vdc, 190-315Vdc	5600	140.0	70	5000K	-40°C < Tamb < 65°C	T5	95°C	90°C
EXA10-040-EM	40W	120-277V 50/60HZ	5600	140.0	70	5000K	0°C < Tamb < 50°C	T6	80°C	90°C
EXA10-050	50W	120-277V 50/60HZ, 18-48Vdc, 190-315Vdc	7000	140.0	70	5000K	-40°C < Tamb < 65°C	T5	95°C	90°C
EXA10-050-EM	50W	120-277V 50/60HZ	7000	140.0	70	5000K	0°C < Tamb < 50°C	T6	80°C	90°C
EXA10-050-AP	20W/35W/50W	120-277V 50/60HZ	7000	140.0	70	5000K	-40°C < Tamb < 65°C	T5	95°C	90°C
EXA10-050-AP-EM	20W/35W/50W	120-277V 50/60HZ	7000	140.0	70	5000K	0°C < Tamb < 50°C	T6	80°C	90°C
EXA10-060	60W	120-277V 50/60HZ, 18-48Vdc, 190-315Vdc	8400	140.0	70	5000K	-40°C < Tamb < 60°C	T5	95°C	90°C
EXA10-060-EM	60W	120-277V 50/60HZ	8400	140.0	70	5000K	0°C < Tamb < 50°C	T5	95°C	90°C
EXA10-075	75W	120-277V 50/60HZ, 18-48Vdc, 190-315Vdc	10500	140.0	70	5000K	-40°C < Tamb < 60°C	T5	95°C	90°C
EXA10-075-EM	75W	120-277V 50/60HZ	10500	140.0	70	5000K	0°C < Tamb < 50°C	T5	95°C	90°C
EXA10-075-AP	30W/53W/75W	120-277V 50/60HZ	10500	140.0	70	5000K	-40°C < Tamb < 60°C	T5	95°C	90°C
EXA10-075-AP-EM	30W/53W/75W	120-277V 50/60HZ	10500	140.0	70	5000K	0°C < Tamb < 50°C	T5	95°C	90°C

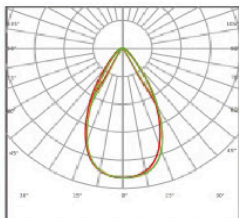
<sup>1</sup> When GS, WG, color LEDs or optics options are selected, total lumens, lumens per watt, CRI, CCT, or ambient temperature may change. Consult factory for values.

# EXA10 LED

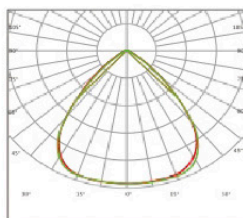
Explosion-proof LED low-bay/jelly jar luminaire for hazardous-rated locations

## Photometric Data

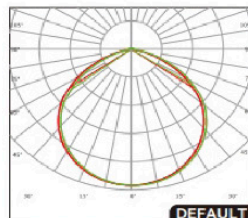
60°



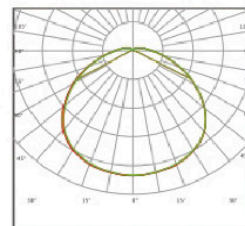
90°



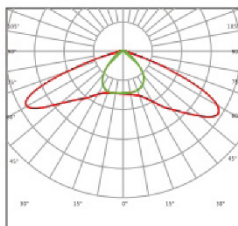
120° (Flat Glass)



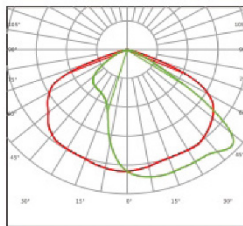
120° (Curved Glass)



Type I



Type III

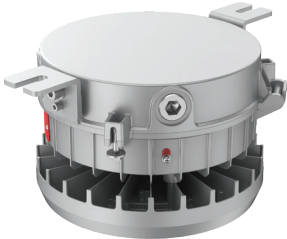


# EXA10 LED

Explosion-proof LED low-bay/jelly jar luminaire for hazardous-rated locations

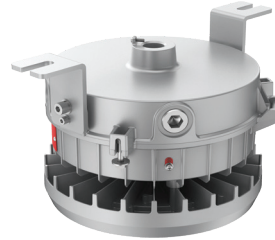
## Mounting Options

### Ceiling Mount: C1



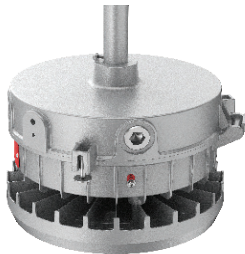
Fixture	Weight
EXA10-030	11.2 lbs.
EXA10-040	11.2 lbs.
EXA10-050	11.2 lbs.
EXA10-060	11.2 lbs.
EXA10-075	11.2 lbs.

### Ceiling Mount: C2



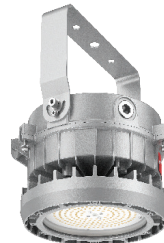
Fixture	Weight
EXA10-030	11.2 lbs.
EXA10-040	11.2 lbs.
EXA10-050	11.2 lbs.
EXA10-060	11.2 lbs.
EXA10-075	11.2 lbs.

### Pendant Mount: P



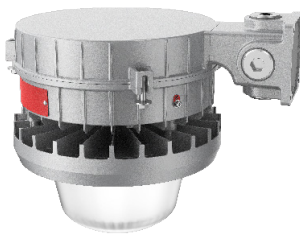
Fixture	Weight
EXA10-030	10.1 lbs.
EXA10-040	10.1 lbs.
EXA10-050	10.1 lbs.
EXA10-060	10.1 lbs.
EXA10-075	10.1 lbs.

### Trunnion Mount: T



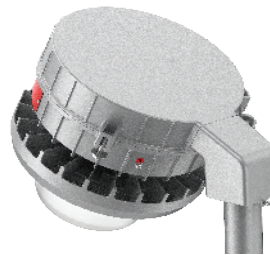
Fixture	Weight
EXA10-030	11.7 lbs.
EXA10-040	11.7 lbs.
EXA10-050	11.7 lbs.
EXA10-060	11.7 lbs.
EXA10-075	11.7 lbs.

### Wall Mount: W



Fixture	Weight
EXA10-030	14.7 lbs.
EXA10-040	14.7 lbs.
EXA10-050	14.7 lbs.
EXA10-060	14.7 lbs.
EXA10-075	14.7 lbs.

### 25° Stanchion Mount: S



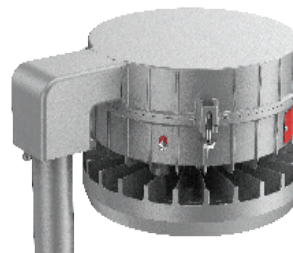
Fixture	Weight
EXA10-030	13.4 lbs.
EXA10-040	13.4 lbs.
EXA10-050	13.4 lbs.
EXA10-060	13.4 lbs.
EXA10-075	13.4 lbs.

### 30° Stanchion Mount: X



Fixture	Weight
EXA10-030	13.6 lbs.
EXA10-040	13.6 lbs.
EXA10-050	13.6 lbs.
EXA10-060	13.6 lbs.
EXA10-075	13.6 lbs.

### 90° Stanchion Mount: V







Fixture	Weight
EXA10-030	13.6 lbs.
EXA10-040	13.6 lbs.
EXA10-050	13.6 lbs.
EXA10-060	13.6 lbs.
EXA10-075	13.6 lbs.

## EXA10 LED

Explosion-proof LED low-bay/jelly jar luminaire for hazardous-rated locations

### Accessories

	Catalog No.	Size (in.)	Shipping Weight (lbs.)
<b>Cone Top</b> 	AD-EXA10-01	21.65" x 12.6"	1.1 lbs
<b>Wire Guard (flat glass)</b> 	BC-EXA10-01	18.5" x 0.44"	0.9 lbs
<b>Wire Guard (curved glass)</b> 	BC-EXA10-02	18.5" x 17.72" x 11.42"	1 lb
<b>Safety Cable</b> 	SL-EXA10-01	12.99"	0.2 lbs



[availinfra.com/rig-a-lite](https://availinfra.com/rig-a-lite)

8500 Hansen Road  
Houston, TX 77075  
(713) 943-0340