

# WFH Series

Fluorescent high-bay lighting  
for hazardous locations

**RIG-A-LITE™**  
An Avail Infrastructure Solutions Company



## Classifications

- Class I, Division 2, Groups A, B, C, & D
- Class II, Division 2, Groups F & G
- Class III
- UL Listed for Wet & Hazardous Locations
- CUL Listed for Wet Locations
- NEMA 4X
- NSF Certified Food Equipment
- High Pressure Hose Down
- One Piece Welded Aluminum Construction
- Rated for -20° F minimum starting temperature
- 55° C (131° F) maximum ambient temperature
- Single or dual hub mounting
- Bolt-on and gasketed cast aluminum hubs
- Water tight, ideal for food processing
- Build America, Buy America Act (BABA) Compliant
- Buy American Act (BAA) Compliant



[availinfra.com/rig-a-lite](http://availinfra.com/rig-a-lite)

8500 Hansen Road,  
Houston, TX 77075  
(713) 943-0340

## WFH Series

### Fluorescent high-bay lighting for hazardous locations

#### Key Features

- 1 Heavy duty one-piece continuously welded corrosion resistant aluminum construction with electrostatically applied baked on epoxy finish
- 2 Watershed design
- 3 Stainless steel captive hardware
- 4 Highly efficient 95° specular reflector standard
- 5 Four or six T8 or T5HO lamps.
- 6 High impact clear acrylic or prismatic lens
- 7 Hinged reflector assembly for easy access to ballast and wiring. Stainless Steel hinge optional



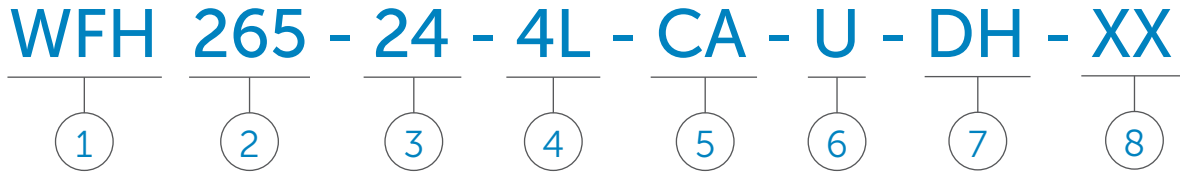
#### Fluorescent Series

	Description	Voltage	Catalog Number
Four Lamp Fixture	54 Watt T5HO Miniature Bi-Pin Lamps, 48"	120-277V 50/60HZ	WFHT5HO-24-4-CA-U
		347-480V 60HZ	WFHT5HO-24-4-CA-N
		347V 60HZ	WFHT5HO-24-4-CA-H
		480V 60HZ	WFHT5HO-24-4-CA-48
	32 Watt Instant Start Medium Bi-Pin T8 265mA Lamps, 48"	120-277V 50/60HZ	WFH265-24-4-CA-U
		347-480V 60HZ	WFH265-24-4-CA-N
		347V 60HZ	WFH265-24-4-CA-H
		480V 60HZ	WFH265-24-4-CA-48
Six Lamp Fixture	54 Watt T5HO Miniature Bi-Pin Lamps, 48"	120-277V 50/60HZ	WFHT5HO-24-6-CA-U
		347-480V 60HZ	WFHT5HO-24-6-CA-N
		347V 60HZ	WFHT5HO-24-6-CA-H
		480V 60HZ	WFHT5HO-24-6-CA-48
	32 Watt Instant Start Medium Bi-Pin T8 265mA Lamps, 48"	120-277V 50/60HZ	WFH265-24-6-CA-U
		347-480V 60HZ	WFH265-24-6-CA-N
		347V 60HZ	WFH265-24-6-CA-H
		480V 60HZ	WFH265-24-6-CA-48

# WFH Series

## Fluorescent high-bay lighting for hazardous locations

### Catalog Number Logic



#### 1

##### BASIC SERIES

WFH Fluorescent Fixture  
Class I, Division 2, Groups A, B, C, & D  
Class II, Division 2, Groups F & G  
Class III  
UL Listed for Wet & Hazardous Locations  
CUL Listed for Wet Locations  
NEMA 4X  
NSF Certified Food Equipment  
Wash Down Rated

#### 2

##### LAMP CURRENT/LAMP WATTAGE

265 = 265mA, 59, 32 Watt (T8 Lamps)  
T5HO = 54 Watt Four Foot Lamp

#### 3

##### NOMINAL FIXTURE LENGTH

24 = 2 x 4 Foot

#### 4

##### NUMBER OF LED STRIPS

4 = 4 Lamps  
6 = 6 Lamps

#### 5

##### LENS TYPE

CA = Clear Acrylic  
PA = Prismatic Acrylic  
CP = Clear Polycarbonate  
(Wet & Hose Down Locations Only)

#### 6

##### VOLTAGE/FREQUENCY

H = 347V 60 HZ  
N = 347 thru 480V 50/60 HZ  
U = 120 thru 277V 50/60 HZ  
48 = 480V 60HZ

#### 7

##### MOUNTING

DH = Dual Hub 1/2 in. NPT  
SH = Single Hub 3/4 in. NPT

#### 8

##### OPTIONS<sup>1</sup>

HL = High Lumen Ballast (T8 Only)  
DM = Dimming Ballast  
EM = Emergency Battery Backup  
EM/NON = Non-Hazardous Emergency  
Battery Backup  
F = Single Fuse  
DF = Double Fuse  
L = Lamps  
LC = Coated Lamps  
WO = White Optic Reflector  
HNG = Hinged Lens Frame  
Z = Cold Storage (-30°C/-22°F  
Minimum Starting Temp.)

<sup>1</sup> Consult factory for pricing

Catalog logic is for explaining catalog number structure only. Not all combinations are possible; consult factory for catalog numbers not listed in charts.

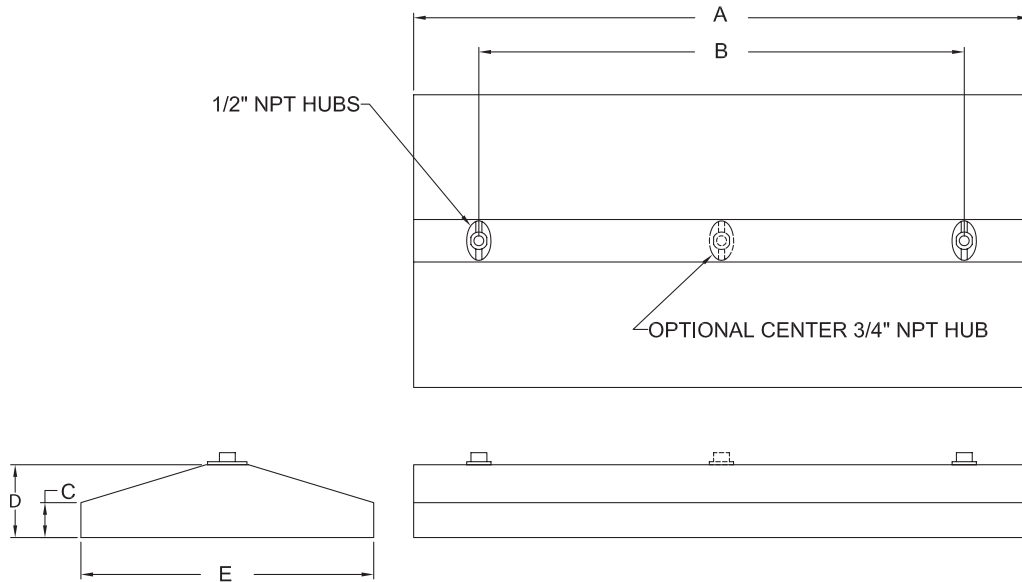
### Certification Guide

OPERATING TEMPERATURE CODE			
WFH Series	Class I, Division 2 Groups A, B, C & D	Class II, Division 2, Groups F & G Group III	Maximum Ambient Temperature
WFH 265 4 & 6 LAMPS	T5 (100°C/212°F)	T3C (160°C/320°F)	55°C (131°F)
WFH T5HO 4 & 6 LAMPS	T5 (100°C/212°F)	T3C (160°C/320°F)	55°C (131°F)

## WFH Series

### Fluorescent high-bay lighting for hazardous locations

#### Fixture Dimensions (inches)



WFH Series	Dimensions (inches)					Hub Size	Boxed Weight	Shipping Volume (Boxed Fixtures)
	A	B	C	D	E			
Up to 6 lamp	50.75	40.0	2.88	6	24.13	1/2	39 lbs.	4.7 cu. ft.

#### Accessories

##### Eye Bolt Mounting Kit



Catalog Number: 53116  
Shipping Weight: 3.0 lbs.  
Cable or Chain Not Included  
Required with Single Hub Mounting Option

##### Fixture Hanger



3/4 in. Male Thread  
Catalog Number: HCK75  
Shipping Weight: 1.7 lbs.

##### Y Fit Cable with 2 ft. Legs



Stainless Steel  
12 ft. Catalog Number: GRYSS122  
22 ft. Catalog Number: GRYSS222  
Shipping Weight: 4 lbs.

# WFH Series

## Fluorescent high-bay lighting for hazardous locations

### Coefficients of Utilization

#### WFHT5HO-24-6-U

% Effective Ceiling Cavity Reflectance rcc	80			50			10		
% Wall Reflectance rw	50	30	10	50	30	10	50	30	10
Room Cavity Ratio RCR	Effective Floor Cavity Reflectance 20%								
0	.96	.96	.96	.90	.90	.90	.82	.82	.82
1	.85	.82	.80	.80	.78	.76	.74	.73	.71
2	.75	.70	.66	.71	.67	.64	.66	.63	.61
3	.67	.61	.56	.63	.59	.55	.59	.56	.53
4	.60	.53	.48	.57	.51	.47	.53	.49	.46
5	.54	.47	.42	.51	.46	.41	.48	.44	.40
6	.49	.42	.37	.47	.41	.37	.44	.40	.36
7	.44	.38	.33	.43	.37	.33	.40	.36	.32
8	.41	.34	.30	.39	.33	.29	.37	.33	.29
9	.38	.31	.27	.36	.31	.27	.34	.30	.26

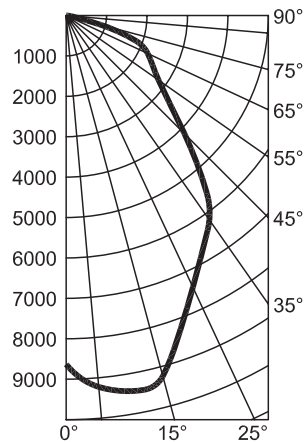
### Candlepower Distribution

Deg.	Parl.	22.5	45	67.5	Norm
0	8631	8631	8631	8631	8631
5	8614	8796	9019	9152	9225
15	8298	8988	9434	9307	9238
25	7680	8730	8387	7694	7419
35	6767	7574	6469	6280	6177
45	5539	5906	5144	4314	4139
55	4091	3967	3106	2924	2787
65	2505	2234	1853	2155	2224
75	961	817	1002	896	858
85	48	75	51	48	34
90	0	0	0	0	0

**Note:**

All data provided for six 54W lamps.  
Lamps rated for 4450 lumens per lamp.

### Photometric Data



[availinfra.com/rig-a-lite](http://availinfra.com/rig-a-lite)

8500 Hansen Road,  
Houston, TX 77075  
(713) 943-0340