

# WFHN Series

Fluorescent high-bay lighting for heavy hose-down environments



## Classifications

- UL 1589 Wet Locations
- UL 8750 LED Safety
- NEMA 4X
- CUL Listed
- NSF Certified Food Equipment
- High Pressure Hose-Down
- One Piece Welded Aluminum Construction
- Rated for -20° F minimum starting temperature
- 50° C (122° F) maximum ambient temperature
- Single or dual hub mounting
- Water shed design
- Stainless steel external hardware
- Bolt-on and gasketed cast aluminum hubs
- Water tight, ideal for food processing
- Low temperature rating suitable for freezers
- Build America, Buy America Act (BABA) Compliant
- Buy American Act (BAA) Compliant



[availinfra.com/rig-a-lite](http://availinfra.com/rig-a-lite)

8500 Hansen Road,  
Houston, TX 77075  
(713) 943-0340

## WFHN Series

### Fluorescent high-bay lighting for heavy hose-down environments

#### Key Features

- 1 Heavy duty one-piece continuously welded corrosion resistant aluminum construction with electrostatically applied baked on epoxy finish
- 2 Watershed design
- 3 Stainless steel captive hardware
- 4 Highly efficient specular reflector
- 5 High impact clear or prismatic acrylic lens. Clear polycarbonate also available
- 6 Hinged reflector assembly for easy access to drivers and wiring. Stainless Steel hinge optional
- 7 Four or six T8 or T5HO lamps



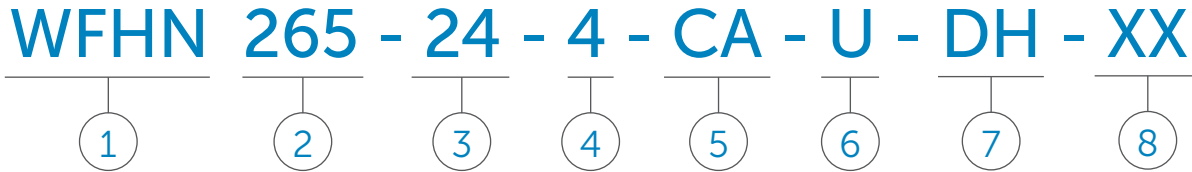
#### Fluorescent Series

Size	Description	Voltage	Catalog Number
Four Lamp Fixture	54 Watt T5HO Miniature Bi-Pin Lamps 48" Clear Acrylic Lens	120-277V 50/60HZ	WFHNT5HO-24-4-CA-U
		347-480V 60HZ	WFHNT5HO-24-4-CA-N
		347V 60HZ	WFHNT5HO-24-4-CA-H
		480V 60HZ	WFHNT5HO-24-4-CA-48
	32 Watt Instant Start Medium Bi-Pin T8 265mA Lamps, 48" Clear Acrylic Lens	120-277V 50/60HZ	WFHN265-24-4-CA-U
		347-480V 60HZ	WFHN265-24-4-CA-N
		347V 60HZ	WFHN265-24-4-CA-H
		480V 60HZ	WFHN265-24-4-CA-48
Six Lamp Fixture	54 Watt T5HO Miniature Bi-Pin Lamps 48" Clear Acrylic Lens	120-277V 50/60HZ	WFHNT5HO-24-6-CA-U
		347-480V 60HZ	WFHNT5HO-24-6-CA-N
		347V 60HZ	WFHNT5HO-24-6-CA-H
		480V 60HZ	WFHNT5HO-24-6-CA-48
	32 Watt Instant Start Medium Bi-Pin T8 265mA Lamps, 48" Clear Acrylic Lens	120-277V 50/60HZ	WFHN265-24-6-CA-U
		347-480V 60HZ	WFHN265-24-6-CA-N
		347V 60HZ	WFHN265-24-6-CA-H
		480V 60HZ	WFHN265-24-6-CA-48

## WFHN Series

Fluorescent high-bay lighting for heavy hose-down environments

### Catalog Number Logic



#### 1 BASIC SERIES

WFHN LED Fixture  
UL 1598 Wet Locations  
UL 8750 LED Safety  
CUL Listed  
NSF Certified Food Equipment  
Wash Down Rated

#### 2 LAMP CURRENT/LAMP WATTAGE

265 = 265mA, 59, 32 Watt (T8 Lamps)  
T5HO = 54 Watt Four Foot Lamp

#### 3 NOMINAL FIXTURE LENGTH

24 = 2 x 4 Foot

#### 4 NUMBER OF LED STRIPS

4 = 4 Lamps  
6 = 6 Lamps

#### 5 LENS TYPE

CA = Clear Acrylic  
PA = Prismatic Acrylic  
CP = Clear Polycarbonate

#### 6 VOLTAGE/FREQUENCY

H = 347V 60 HZ  
N = 347 thru 480V 50/60 HZ  
U = 120 thru 277V 50/60 HZ  
48 = 480V 60HZ

#### 7 MOUNTING

DH = Dual Hub 1/2 in. NPT  
SH = Single Hub 3/4 in. NPT

#### 8 OPTIONS<sup>1</sup>

HL = High Lumen Ballast (T8 Only)  
DM = Dimming Ballast  
EM = Emergency Battery Backup  
EM/NON = Non-Hazardous  
Emergency Backup  
F = Single Fuse- For USL  
luminaires only (For  
luminaires rated 277 VAC  
or less)  
DF = Double Fuse- For USL  
luminaires only (For  
luminaires rated 277 VAC  
or less)  
L = Lamps  
LC = Coated Lamps  
SP = 95% Specular Reflector  
WO = White Optic Reflector  
HNG = Hinged Lens Frame  
Z = Cold Storage (-30°C/-22°F  
Minimum Starting Temp.)  
OB = Out Board Option

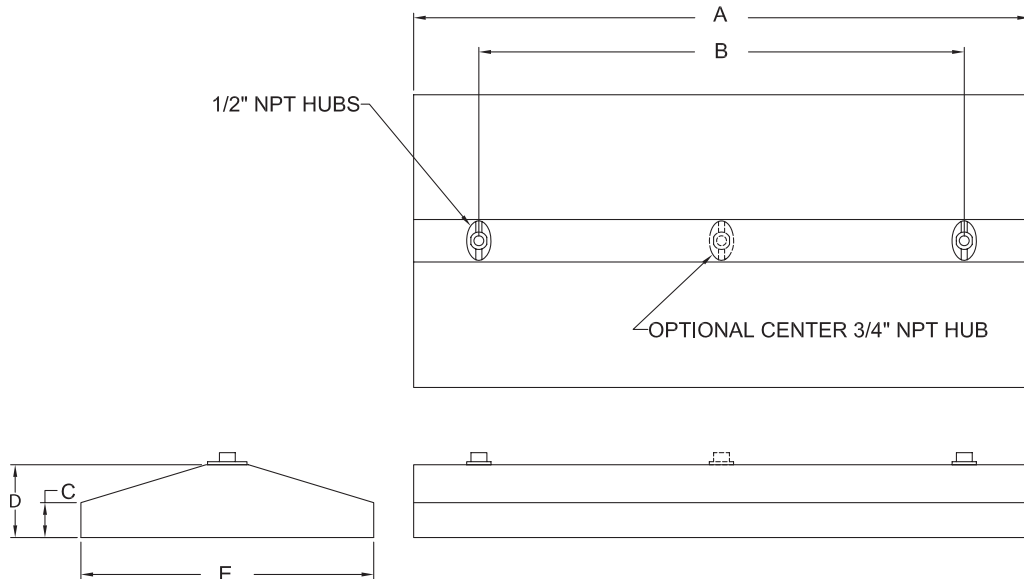
<sup>1</sup> Consult factory for pricing

Catalog logic is for explaining catalog number structure only. Not all combinations are possible; consult factory for catalog numbers not listed in charts.

## WFHN Series

Fluorescent high-bay lighting for heavy hose-down environments

### Fixture Dimensions (inches)



WFHN Series	Dimensions (inches)					Hub Size	Boxed Weight	Shipping Volume (Boxed Fixtures)
	A	B	C	D	E			
4 ft. Fixture	50.75	40.0	2.88	6	24.13	1/2	39 lbs.	4.7 cu. ft.

### Accessories

#### Eye Bolt Mounting Kit



Catalog Number: 53116  
Shipping Weight: 3.0 lbs.  
Cable or Chain Not Included  
Required with Single Hub Mounting Option

#### Fixture Hanger



3/4 in. Male Thread  
Catalog Number: HCK75  
Shipping Weight: 1.7 lbs.

#### Y Fit Cable with 2 ft. Legs



Stainless Steel  
12 ft. Catalog Number: GRYSS122  
22 ft. Catalog Number: GRYSS222  
Shipping Weight: 4 lbs.

#### Occupancy Sensor



120/277VAC Sensor Module  
Catalog Number: 76007  
Shipping Weight: 0.25 lbs.  
**Lenses:**  
10' Mounting Height Number: 76003  
20' Mounting Height Number: 76008  
40' Mounting Height Number: 76009  
(not suitable for hazardous locations)

# WFHN Series

Fluorescent high-bay lighting for heavy hose-down environments

## Coefficients of Utilization

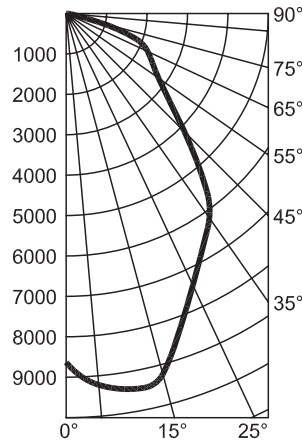
### WFHNT5HO-24-6-U

% Effective Ceiling Cavity Reflectance rcc	80			50			10		
% Wall Reflectance rw	50	30	10	50	30	10	50	30	10
Room Cavity Ratio RCR	Effective Floor Cavity Reflectance 20%								
0	.96	.96	.96	.90	.90	.90	.82	.82	.82
1	.85	.82	.80	.80	.78	.76	.74	.73	.71
2	.75	.70	.66	.71	.67	.64	.66	.63	.61
3	.67	.61	.56	.63	.59	.55	.59	.56	.53
4	.60	.53	.48	.57	.51	.47	.53	.49	.46
5	.54	.47	.42	.51	.46	.41	.48	.44	.40
6	.49	.42	.37	.47	.41	.37	.44	.40	.36
7	.44	.38	.33	.43	.37	.33	.40	.36	.32
8	.41	.34	.30	.39	.33	.29	.37	.33	.29
9	.38	.27	.27	.36	.31	.27	.34	.30	.26

## Candlepower Distribution

Deg.	Parl.	22.5	45	67.5	Norm
0	8631	8631	8631	8631	8631
5	8614	8796	9019	9152	9225
15	8298	8988	9434	9307	9238
25	7680	8730	8387	7694	7419
35	6767	7574	6469	6280	6177
45	5539	5906	5144	4314	4139
55	4091	3967	3106	2924	2787
65	2505	2234	1853	2155	2224
75	961	817	1002	896	858
85	48	75	51	48	34
90	0	0	0	0	0

## Photometric Data



An Avail Infrastructure Solutions Company

[availinfra.com/rig-a-lite](http://availinfra.com/rig-a-lite)

8500 Hansen Road,  
Houston, TX 77075  
(713) 943-0340