

FPF Series

Non-metallic fixture
for food processing

RIG-A-LITE™
An Avail Infrastructure Solutions Company



Classifications

- UL 924 Emergency Lighting
- UL 1598 Wet Locations
- CUL
- NSF Certified Food Equipment
- High Pressure Hose Down
- Build America, Buy America Act (BABA) Compliant
- Buy American Act (BAA) Compliant



availinfra.com/rig-a-lite

8500 Hansen Road
Houston, TX 77075
(713) 943-0340

FPF Series

Non-metallic fixture for food processing

Key Features

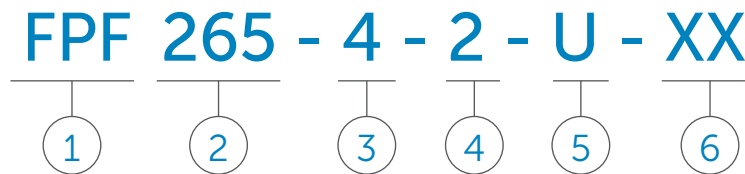
- 1 Stainless steel external hardware
- 2 Industry leading watershed design
- 3 Fixed mount and chain mount options
- 4 Polycarbonate end caps standard (stainless steel available)
- 5 Impact resistant acrylic housing
- Indoor or outdoor use
- High pressure hose down
- Emergency option available



FPF Series

Non-metallic fixture for food processing

Catalog Number Logic



1

BASIC SERIES¹

FPF Non-Metallic Fluorescent Fixture
UL 1598 Wet Locations
CUL
NSF Certified Food Equipment

2

LAMP CURRENT/LAMP WATTAGE

265 = 265mA, 59, 32 or 17 Watt
(T8 Lamps)

3

NOMINAL FIXTURE LENGTH

2 = 2 Foot
4 = 4 Foot
8 = 8 Foot

4

NUMBER OF LAMPS

2 = 2 Lamp
4 = 4 Lamp (8 ft. Only)

5

VOLTAGE/FREQUENCY

H = 347V 60 HZ
U = 120 thru 277V 50/60 HZ

6

OPTIONS²

F = Single Fuse
HL = Hi-Lumen Ballast (T8 Only)
L = Lamps
LC = Coated Lamps
SS = Stainless Steel End Caps
EON = Emergency Only
ENN = Emergency & Normal Operation
ENS = Emergency & Normal Switched

¹ Fixtures are furnished with FPFCMKT1 standard, non-metallic cord grip and 3 ft. long #16. AWG 3 conductor type SOA cable.

² Consult factory for pricing.

Catalog logic is for explaining catalog number structure only. Not all combinations are possible; consult factory for catalog numbers not listed in charts.

FPF Series

Non-metallic fixture for food processing

Fluorescent Series



Features

- UL 1598 Wet Locations
- CUL
- NSF Certified Food Equipment
- Non-metallic housing
- Aluminum reflector and ballast cover
- External stainless steel hardware
- Suitable for high pressure hose down
- Suitable for indoor or outdoor
- Optional stainless steel end caps available

Fluorescent Emergency Series



Features

- Emergency illumination meets OSHA, Life Safety Code (NFPA 101), and National Electric Code (NFPA 70) requirements
- Switched or non-switched applications
- Provides 1100-1200 lumens of initial light output in emergency mode
- Provides at least 90 minutes of illumination in emergency mode
- Sealed, maintenance-free nickel cadmium batteries with a life expectancy of 7-10 years
- Self Contained unitized construction
- Easily identified as an emergency lighting fixture
- Charging indicator LED pilot light
- Battery cut-off switch is standard
- NSF Certified Food Equipment

With emergency option, red polycarbonate endcaps are furnished.

For fixtures with stainless steel endcaps, emergency labels are installed on each side in the center, clearly visible through the acrylic housing.

FPF Series

Non-metallic fixture for food processing

Fluorescent Series

(Lamps not included)	Description	Voltage	Catalog Number
Two Foot Fixture	17 Watt, Instant Start Medium Bi-Pin, T8 265mA Lamps, 24"	120-277V 50/60 HZ	FPF265-2-2L-U
Four Foot Fixture	32 Watt, Instant Start Medium Bi-Pin, T8 265mA Lamps, 48"	120-277V 50/60 HZ	FPF265-4-2L-U
Eight Foot Fixture	32 Watt, Instant Start Medium Bi-Pin, T8 265mA Lamps, 48"	120-277V 50/60 HZ	FPF265-8-4L-U
	59 Watt, Rapid Start Slimline, T8 Single Pin 265mA Lamps, 96"	120-277V 50/60 HZ	FPF265-8-2L-U

Fixtures are furnished with stainless steel chain mount kit, non-metallic cord grip and 3 ft. long #16 AWG 3 conductor type SOA cable.

FPF Series

Non-metallic fixture for food processing

Fluorescent Emergency Series

(Lamps not included)

Fixture Type	Circuit Type	Nominal Fixture Length	Description	Voltage	Catalog Number
Emergency Only Operation	Non-Switched ①	Two Foot 2 Lamp Fixture	20 Watt, Preheat, Trigger Start Medium B-Pin, T12 430mA Lamps, 24" (export only)	120-277V 50/60 HZ	FPF430-2-2L-U-EON
			17 Watt, Instant Start, Medium Bi-Pin, T8 265mA Lamps, 24"	120-277V 50/60 HZ	FPF265-2-2L-U-EON
		Four Foot 2 Lamp Fixture	34 Watt, Rapid Start Medium Bi-Pin, T12 430mA Lamps, 48" (export only)	120-277V 50/60 HZ	FPF430-4-2L-U-EON
			32 Watt, Instant Start, Medium Bi-Pin, T8 265mA Lamps, 48"	120-277V 50/60 HZ	FPF265-4-2L-U-EON
			60 Watt, Rapid Start, High Output T12, Recessed Double Contact 800mA Lamps, 48"	120-277V 50/60 HZ	FPF800-4-2L-U-EON
Emergency and Normal Operation	Non-Switched ①	Four Foot 2 Lamp Fixture	32 Watt, Instant Start, Medium Bi-Pin, T8 265mA Lamps, 48"	120-277V 50/60 HZ	FPF265-4-2L-U-ENN
		Eight Foot 2 Lamp Fixture	59 Watt, Rapid Start, Slimline Single Pin, T8, 265mA Lamps, 96"	120-277V 50/60 HZ	FPF265-8-2L-U-ENN
		Eight Foot 4 Lamp Fixture	32 Watt, Instant Start, Medium Bi-Pin, T8 265mA Lamps, 48"	120-277V 50/60 HZ	FPF265-8-4L-U-ENN
	Switched ②	Four Foot 2 Lamp Fixture	32 Watt, Instant Start, Medium Bi-Pin, T8 265mA Lamps, 48"	120-277V 50/60 HZ	FPF265-4-2L-U-ENS
		Eight Foot 2 Lamp Fixture	59 Watt, Rapid Start, Slimline Single Pin, T8, 265mA Lamps, 96"	120-277V 50/60 HZ	FPF265-8-2L-U-ENS
		Eight Foot 4 Lamp Fixture	32 Watt, Instant Start, Medium Bi-Pin, T8 265mA Lamps, 96"	120-277V 50/60 HZ	FPF265-8-4L-U-ENS

① Non-Switched fixtures are furnished with stainless steel chain mount kit, non-metallic cord grip and 3 ft. long #16 AWG 3 conductor type SOA cable.

② Switched fixtures are furnished with stainless steel chain mount kit, non-metallic cord grip and 3 ft. long #16 AWG 4 conductor type SOA cable.

FPF Series

Non-metallic fixture for food processing

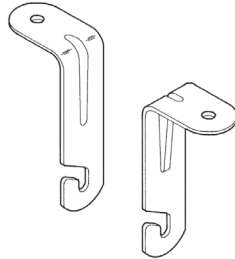
Accessories

Fixed Mounting Bracket Kit

Material:
Stainless Steel
for 3/8 in. bolts (not provided)

Catalog Number:
FPFXDMKT

Shipping Weight:
0.4 lbs.



Chain Mounting Kit

Material:
Stainless Steel

Catalog Number:
FPFCMKT1

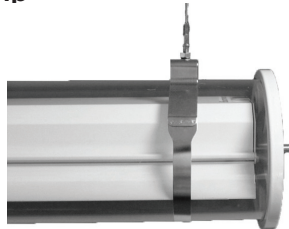
Shipping Weight:
0.2 lbs.



Stainless Steel Band Clamp

Catalog Number:
FPFBNDMKT

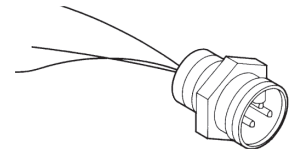
Shipping Weight:
1.0 lbs.



Mini Receptacle 3P Male

Catalog Number:
64005

Shipping Weight:
0.1 lbs.



Pigtail Assembly - 3 ft. Cable

Other Lengths Available
- Consult Factory

Catalog Number:
53108

Shipping Weight:
0.4 lbs.

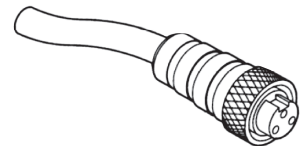


Mini Plug - 6 ft. Mini Cable

Other Lengths Available
- Consult Factory

Catalog Number:
60006

Shipping Weight:
0.6 lbs.



Polycarbonate Endcap Kit

Includes All Gaskets Glued in Place

Catalog Number:
53101

Shipping Weight:
3 lbs.



Stainless Endcap Kit

Includes All Gaskets Glued in Place

Catalog Number:
53101SS

Shipping Weight:
2.5 lbs.



FPF Series

Non-metallic fixture for food processing

Coefficients of Utilization

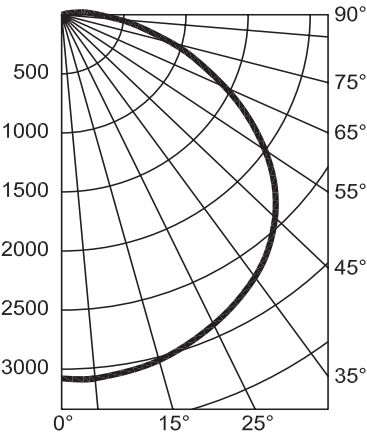
FPF226584L

% Effective Ceiling Cavity Reflectance rcc	80			50			10		
% Wall Reflectance rw	50	30	10	50	30	10	50	30	10
Room Cavity Ratio RCR	Effective Floor Cavity Reflectance 20%								
0	.67	.67	.67	.62	.62	.62	.56	.56	.56
1	.57	.55	.52	.53	.51	.50	.49	.47	.46
2	.50	.46	.42	.46	.43	.40	.42	.40	.38
3	.43	.39	.35	.41	.37	.34	.37	.34	.32
4	.38	.33	.29	.36	.32	.28	.33	.30	.27
5	.34	.29	.25	.32	.28	.24	.30	.26	.24
6	.31	.25	.22	.29	.24	.21	.27	.23	.21
7	.28	.23	.19	.26	.22	.19	.24	.21	.18
8	.25	.20	.17	.24	.20	.17	.22	.19	.16
9	.23	.18	.15	.22	.18	.15	.21	.17	.15
10	.21	.17	.14	.20	.16	.13	.19	.16	.13

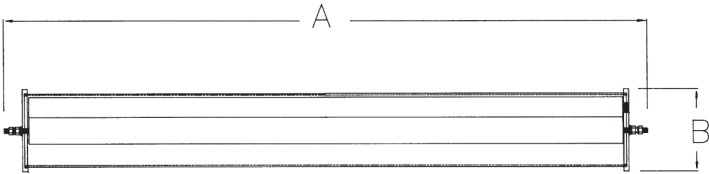
Candlepower Distribution

Deg.	Parl.	22.5	45	67.5	Norm
5	3076	3039	3045	3066	3101
15	2969	2943	2959	2991	3028
25	2744	2741	2789	2850	2893
35	2423	2453	2552	2658	2711
45	2007	2088	2253	2380	2428
55	1500	1654	1848	1980	1998
65	930	1170	1345	1446	1451
75	376	667	792	908	914
85	51	246	362	460	464
90	18	119	216	284	304

Photometric Data



Fixture Dimensions (inches)



FPF Series	Dimensions (inches)		Boxed Weight	Shipping Volume (Boxed Fixtures)
	A	B		
2 Foot Models	28.00	6.75	10 lbs.	1.2 cu. ft.
4 Foot Models	52.00	6.75	20 lbs.	2.1 cu. ft.
6 Foot Models	100.00	6.75	30 lbs.	4.0 cu. ft.



availinfra.com/rig-a-lite

8500 Hansen Road
Houston, TX 77075
(713) 943-0340