

# AFL Floodlight

Flood lighting for  
hazardous locations

**RIG-A-LITE™**  
An Avail Infrastructure Solutions Company



## Classifications

- Class I, Division 2, Groups A, B, C & D
- UL 844 Hazardous Locations
- UL 1598A Marine Outside Type
- UL 1598 Wet Locations
- Zone 2, Groups IIA, IIB & IIC
- CSA C22.2 No. 250.0-88
- CSA C22.2 No. 137-M1981
- Cast Aluminum
- 55°C Ambient Temperature
- IP66
- NEMA 4X
- Build America, Buy America Act (BABA) Compliant
- Buy American Act (BAA) Compliant



[availinfra.com/rig-a-lite](http://availinfra.com/rig-a-lite)

8500 Hansen Road,  
Houston, TX 77075  
(713) 943-0340

# AFL Floodlight

## Flood lighting for hazardous locations

### Key Features

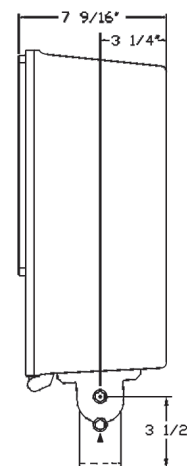
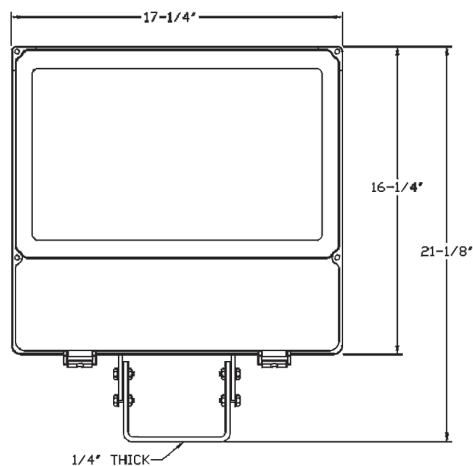
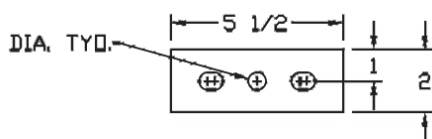
- 1 One-piece copper-free cast aluminum lamp and ballast housing with baked on powder coat finish
- 2 Precision-formed specular reflector for optimum photometric and lighting performance
- 3 Thermal, shock, heat and impact resistant tempered clear glass lens
- 4 Hinged copper-free cast aluminum lens frame with front access for easy relamping and access
- 5 Four permanent safety cable attachment points
- 6 Sturdy mounting yoke



### Fixture Dimensions (inches)

#### Effective Projected Area 2.0 sq. ft.

175-400 Watt Metal Halide  
70-400 High Pressure Sodium



# AFL Floodlight

## Flood lighting for hazardous locations

### Catalog Number Logic

**AFL1 40 - S - 04 - T - 66 - XX**

1 2 3 4 5 6 7

#### 1

##### BASIC SERIES

AFL Floodlight Series

- (i) AFL1 = 70-400 Watt Metal Halide and High Pressure Sodium ; Class I, Division 2, Groups A, B, C & D ; Zone 2, Groups IIA, IIB and IIC ; UL 844 Hazardous Locations ; UL 1598A Marine Outside Type ; CUL

#### 2

##### LAMP CURRENT/LAMP WATTAGE

- 07 = 70 Watt  
10 = 100 Watt  
15 = 150 Watt  
17 = 175 Watt  
25 = 250 Watt  
32 = 320 Watt  
35 = 350 Watt  
40 = 400 Watt

#### 3

##### LAMP TYPE (MOGUL BASE)

- S = High Pressure Sodium (70, 100, 150, 200, 250, 400 Watt)  
H = Metal Halide (70, 100, 150, 175, 250, 320, 350, 400, Watt)

#### 4

##### BALLASTIC VOLTAGE

- 04 = Multi-Tap (120, 208, 240 & 277V)  
12 = 120V 60 HZ  
20 = 208V 60HZ  
22 = 220V 50 HZ  
24 = 240V 60 HZ  
27 = 277V 60 HZ  
34 = 347V 60 HZ  
48 = 480V 60 HZ

#### 5

##### MOUNTING

- T = Trunnion

#### 6

##### BEAM SPREAD

- 66 = 6V X 6H

#### 7

##### OPTIONS<sup>1</sup>

- Q = Auxiliary Quartz Relay  
QTD = Auxiliary Quartz Relay Hot and Cold Start  
PC = Photo Cell<sup>3</sup>  
V = Visor  
LS = Lamp Support  
FB1 = Single Fuse Block<sup>2,3,4</sup>  
FB2 = Double Fuse Block<sup>2,3</sup>  
PL = Clear Acrylic Shield  
SMS = Shock Mounted Socket  
SC = Safety Cable (Eye Bolt Included)  
PS = Pulse Start<sup>5</sup>  
R = Instant Restrike (HPS only up to 150W)

<sup>1</sup> Consult factory for pricing.

<sup>2</sup> Limited to 175W Maximum HID Lamp

<sup>3</sup> Not suitable for hazardous locations.

<sup>4</sup> Not available with multi-tap ballast unless incoming voltage is specified. When installed, one fuse block/fuse holder is provided for 120, 277V. Fuse not included. Option not available for marine listed fixtures.

<sup>5</sup> Use universal or appropriate position oriented lamp.

Catalog logic is for explaining catalog number structure only. Not all combinations are possible; consult factory for catalog numbers not listed in charts.

### Certification Guide

Model	Lamp	Ambient Temperature, °C	Class I, Div. 2, Group A, B, C & D	Supply Wire Suitable Temperature, °C
AFL140	MH	55	T1 (350°C)	105
AFL125	MH	55	T1 (325°C)	90
AFL117	MH	55	T1 (325°C)	90
AFL115	MH	55	T1 (325°C)	90
AFL140	HPS	55	T1 (450°C)	105
AFL125	HPS	55	T1 (350°C)	90
AFL115	HPS	55	T1 (350°C)	90

# AFL Floodlight

## Flood lighting for hazardous locations



Shown with optional visor.  
(Lamps not included)

- Class I, Division 2, Groups A,B,C and D  
(See below for suitability as designated for ①,② or ③)
- UL 844 Hazardous Locations
- UL 1598A Marine Outside Type
- Zone 2, Groups IIA, IIB and IIC
- One-piece copper-free cast aluminum lamp and ballast housing with baked on bronze polyester powder coat finish
- Precision formed specular finished reflector for optimum photometric performance
- Thermal shock, heat and impact-resistant tempered glass lens
- Marine grade hardware
- 55°C Ambient Temperature (AFL1 Series)

Fixture Type	Figure Number	Lamp Wattage	Voltage	Catalog Number	Shipping Weight (lbs.)
High Pressure Sodium	1	70	Multi-Tap*	AFL07-S-04-T-66 ①②③	34.0
			480V/60HZ	AFL07-S-48-T-66 ①②③	34.0
		100	Multi-Tap*	AFL110-S-04-T-66 ①②③	34.0
			480V/60HZ	AFL110-S-48-T-66 ①②③	34.0
		150	Multi-Tap*	AFL115-S-04-T-66 ①②③	34.0
			480V/60HZ	AFL115-S-48-T-66 ①②③	34.0
		250	Multi-Tap*	AFL125-S-04-T-66 ①②③	37.0
			480V/60HZ	AFL125-S-48-T-66 ①②③	36.5
		400	Multi-Tap*	AFL140-S-04-T-66 ①②③	39.5
			480V/60HZ	AFL140-S-48-T-66 ①②③	39.0
Metal Halide	1	175	Multi-Tap*	AFL117-H-04-T-66-PS ①②	35.0
			480V/60HZ	AFL117-H-48-T-66-PS ①②	35.0
		250	Multi-Tap*	AFL125-H-04-T-66-PS ①②③	35.0
			480V/60HZ	AFL125-H-48-T-66-PS ①②③	34.0
		320	Multi-Tap*	AFL132-H-04-T-66-PS ①②③	39.5
			480V/60HZ	AFL132-H-48-T-66-PS ①②③	39.0
		350	Multi-Tap*	AFL135-H-04-T-66 ①②③	36.5
			480V/60HZ	AFL135-H-48-T-66 ①②③	36.5
		400	Multi-Tap*	AFL140-H-04-T-66 ①②③	36.5
			480V/60HZ	AFL140-H-48-T-66 ①②③	36.5

\*120/208/240/277V 60HZ

① Class I, Division 2, UL 844 Listed

② UL 1598A Listed

③ CUL

# AFL Floodlight

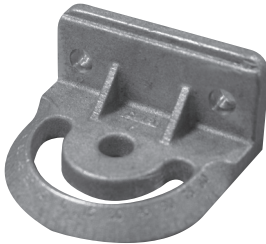
## Flood lighting for hazardous locations

### Accessories

#### 180° Yoke

##### Horizontal Mounting Kit

180° Adjustment, Includes (2) 1/2 in. Bolts  
Catalog Number: FLB-2  
Shipping Weight: 1.4 lbs.



#### 90° Yoke

##### Horizontal Mounting Kit

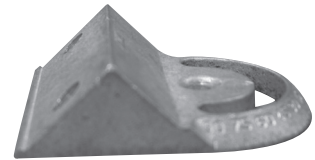
90° Adjustment, Includes (2) 1/2 in. Bolts  
Catalog Number: FLB-2-90  
Shipping Weight: 1.3 lbs.



#### 45° Yoke

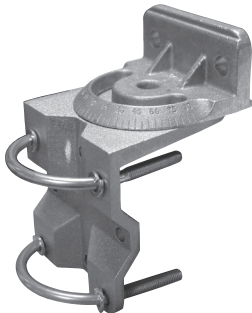
##### Horizontal Mounting Kit

45° Adjustment, Includes (2) 1/2 in. Bolts  
Catalog Number: FLB-2-45  
Shipping Weight: 1.5 lbs.



#### Wall or Pole Mounting Kit

Wall or Pole Mount, Includes (2) U-Bolts  
Catalog Number: FLB-3  
Shipping Weight: 3.6 lbs.



#### Pole Top Mounting Kit

Gasket Wiring Compartment Adapts  
Horizontal or Vertical Mounting Yokes,  
Includes (8) Set Screws,  
Catalog Number: RSF5  
Shipping Weight: 5 lbs.



*Note: FLB-3 and FLB-5 fit 2 in. to 2-1/2 in. pipe size (2-3/8 in. to 2-7/8 in. O.D.)*

**RIG-A-LITE™**  
An Avail Infrastructure Solutions Company

[availinfra.com/rig-a-lite](http://availinfra.com/rig-a-lite)

8500 Hansen Road,  
Houston, TX 77075  
(713) 943-0340

© 2025 Avail Infrastructure Solutions 04/2025 GDI