



UL Verification Services Inc.
7036 Snowdrift Road
Allentown, PA 18106
610-774-1300



Photometric Test Report

Relevant Standards
IES LM-79-2019, ANSI C82.77-10-2014, UL 1598-2008
CIE 13.3-1995, CIE 15-2004, ANSI C78.377-2017
IES TM-30-2018

Prepared For
Rig-A-Lite Partnership Ltd
8500 HANSEN RD
HOUSTON, TX 77075-1006
United States

Catalog Number

MHD11L24U

Order Number

15043848

Test Number

15043848.03

Test Date

2023-11-22 - 2023-11-28

Prepared By

Dylan Fonner, Laboratory Technician

Approved By

Jesse Litchfield, Project Handler

The results contained in this report pertain only to the tested sample.
This report shall not be reproduced, except in full, without written approval of Underwriters Laboratories.
This report must not be used by the client to claim product certification, approval, or endorsement by
NVLAP, NIST, or any agency of the Federal Government.



Table of Contents

| | |
|-----------------------------------|--------|
| Summary of Results | Page 3 |
| Integrating Sphere Results | Page 4 |
| In-Situ Results | Page 5 |
| Full TM-30 Report | Page 6 |

Laboratory results may not be representative of field performance
Ballast factors have not been applied

Testing was performed in a 3-meter integrating sphere using the 4π geometry method.

Absorption correction was employed for Sphere measurement

Luminaire Description: Gray plastic housing with textured lens
Lamp: 336 LEDs (168 LEDs per board)
Mounting: Pendant
Ballast/Driver: Philips Advance Driver XI095C275V054BSf2

Luminaire



Summary of Results

Integrating Sphere

Luminous Flux: 10860 Lumens
 Efficacy: 146.46 lm/w
 CCT: 4089 K
 CRI (Ra): 83.2

Electrical Data at 120 VAC

Test Temperature: 24.3 °C
 Voltage: 120.0 VAC
 Current: 0.6190 A
 Power: 74.15 W
 Power Factor: 0.998
 Frequency: 60 Hz
 Current THD: 3.09 %

In-Situ

LED Temperature: 56.1 °C
 Driver Temperature: 54.6 °C
 Measured LED Current: 0.06900 A

Temperature is offset to an ambient temperature of 25°C as described in UL1598-2008.

Color Quality - Integrating Sphere

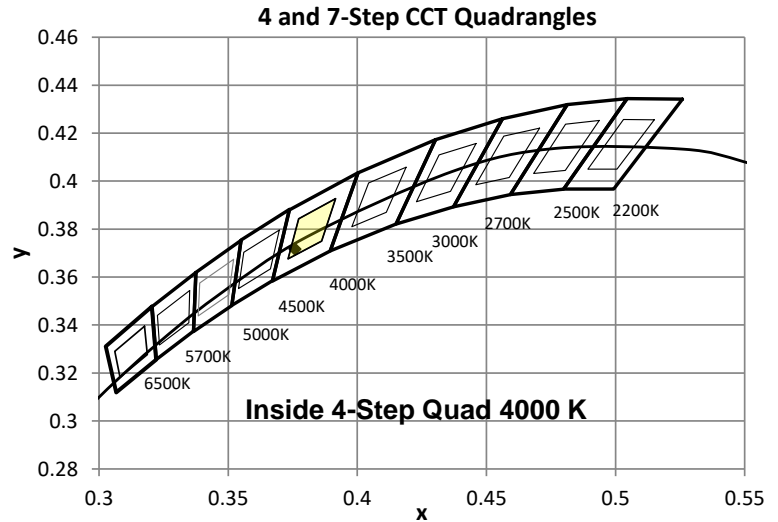
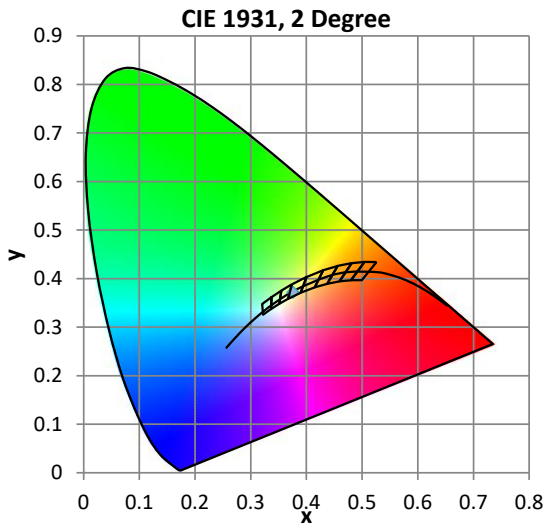
Integrating Sphere Test Conditions

| Temperature | Voltage | Current | Power | Power Factor | Frequency | Current THD |
|-------------|-----------|----------|---------|--------------|-----------|-------------|
| 24.3 °C | 120.0 VAC | 0.6190 A | 74.15 W | 0.998 | 60 Hz | 3.09 % |

Summary of Results

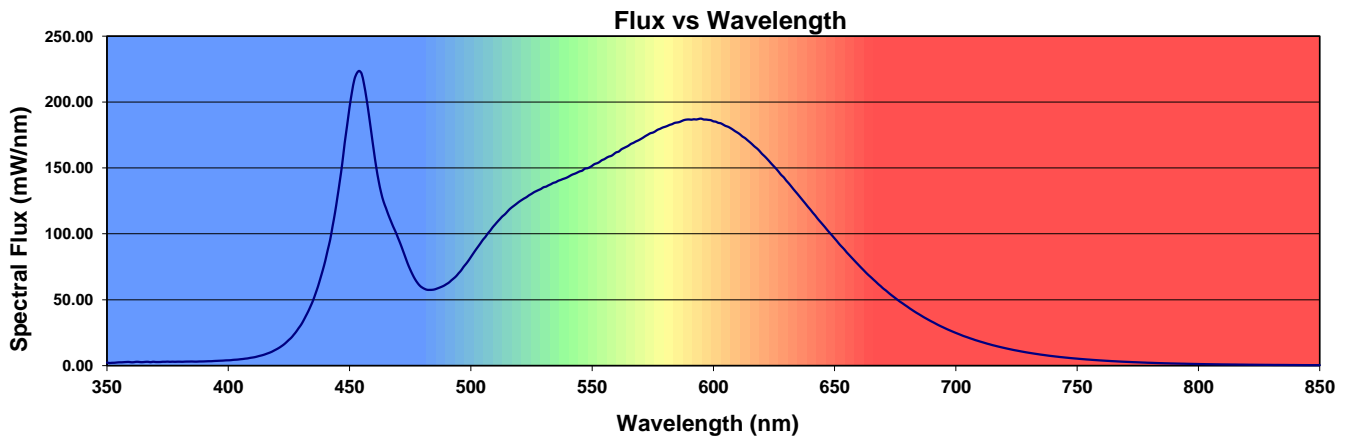
| | | | |
|-----------------------------|--------------|---------------------------|---------|
| Total Output: | 10860 Lumens | Chromaticity (x): | 0.3759 |
| Efficacy: | 146.5 lm/w | Chromaticity (y): | 0.3717 |
| CCT: | 4089 K | Chromaticity (u'): | 0.2241 |
| CRI (Ra): | 83.2 | Chromaticity (v'): | 0.4987 |
| CRI (R9): | 11.3 | TM-30 Rf: | 83 |
| Peak Wavelength: | 454 nm | TM-30 Rg: | 95 |
| Dominant Wavelength: | 555 nm | TM-30 Rcs,h1: | -12% |
| S/P Ratio: | 1.72 | Duv: | -0.0010 |
| M/P Ratio: | 0.71 | | |

WELL Building Standard v2



Color Rendering Index Detail

| Ra (CRI) | R1 | R2 | R3 | R4 | R5 | R6 | R7 | R8 | R9 | R10 | R11 | R12 | R13 | R14 | R15 |
|----------|------|------|------|------|------|------|------|------|------|------|------|------|------|------|------|
| 83.2 | 81.9 | 90.0 | 94.6 | 81.2 | 81.5 | 85.2 | 86.0 | 65.4 | 11.3 | 75.2 | 79.5 | 60.6 | 84.1 | 97.2 | 76.5 |



In-Situ Test

In-Situ Test Conditions

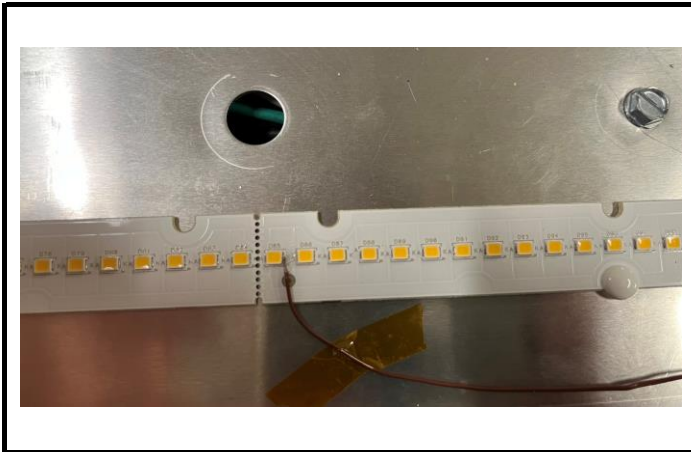
| Temperature | Voltage | Current | Power | Power Factor | Frequency | Current THD |
|-------------|-----------|---------|-------|--------------|-----------|-------------|
| 21.2 °C | 121.5 VAC | N/A | N/A | N/A | 60 Hz | N/A |

Summary of Results

LED Temperature: 56.1 °C
 Driver Temperature: 54.6 °C
 Measured LED Current: 0.06900 A

Temperatures are offset to an ambient temperature of 25°C as described in UL1598-2008

LED Temperature Location



Thermocouple Reference



Driver Temperature Location



ANSI/IES TM-30-18 Color Rendition Report

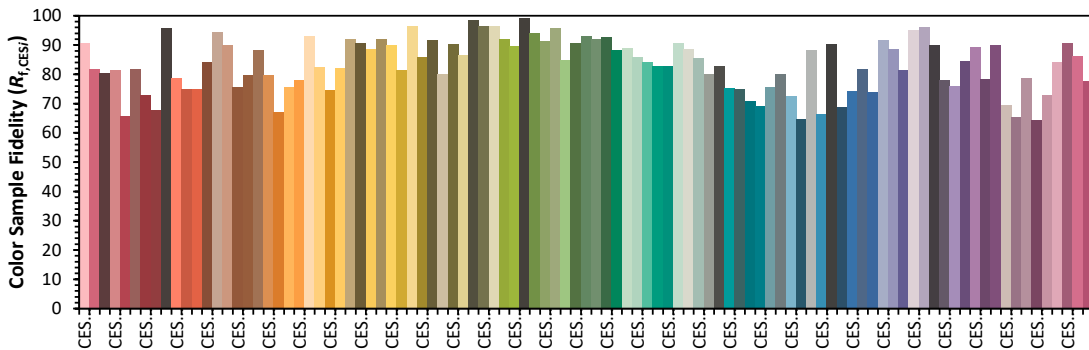
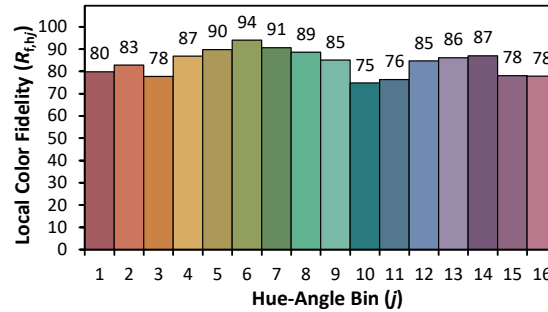
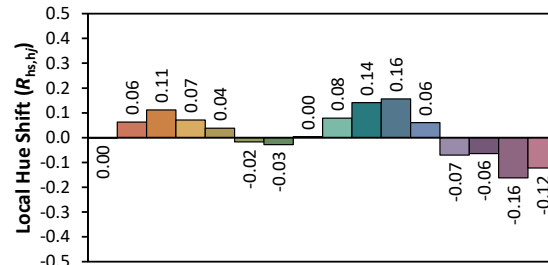
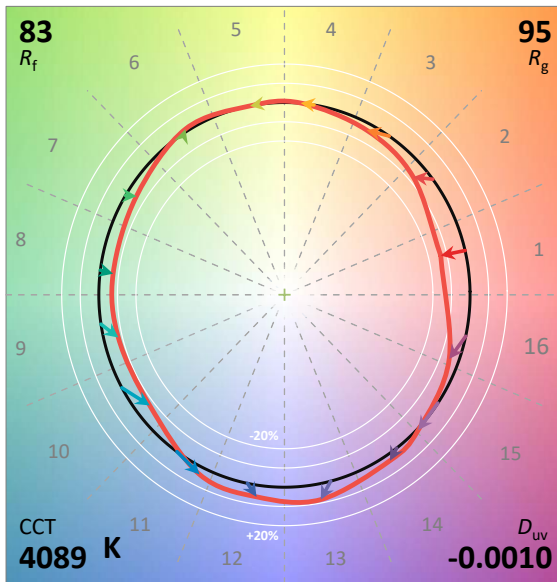
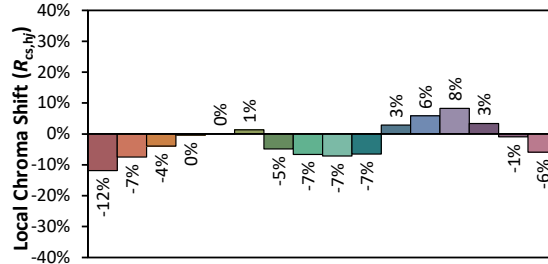
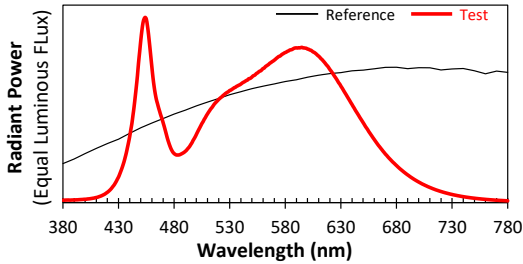
Date: 2023-11-22

Manufacturer:

Rig-A-Lite Partnership Ltd

Model:

MHD11L24U



Notes: This is a recommended method for displaying ANSI/IES TM-30-18 information.

x 0.3759
y 0.3717
u' 0.2241
v' 0.4987

| | |
|---------------------|----|
| CIE 13.3-1995 (CRI) | |
| R_a | 83 |
| R_g | 11 |

Colors are for visual orientation purposes only. Created with the IES TM-30-18 Calculator Version 2.00.