

Field Machining Services

High-quality machining capabilities with extensive expertise



Expert on-site machinists

WSI Field Machining Services specializes in machining and tooling solutions, planned or emergent, to extend the operating life of critical systems, equipment, and components. With high-quality machining capabilities and extensive expertise, we are equipped to meet on-site repair demands, ensuring rapid response times.

WSI's expert on-site machinists perform a broad range of machining procedures, including large-scale flange facing, line boring, and pipe severing/beveling, and address unique requirements with our proprietary tooling.

WSI's field machining advantages

- A global team of machining specialists to ensure rapid, expert response
- Innovative engineered technologies and specialized proprietary tooling
- Extensive equipment inventory and in-place skilled machinists
- Large- and small-scale maintenance and emergency repair work
- Turnkey solutions for welding and field machining needs

Field machining services provided by WSI

WSI's industry experience, global presence, and best-in-class execution have been the key to delivering improved plant reliability safely and effectively to energy producers globally.

Flange Facing

WSI has extensive experience machining standard raised face flanges to ASME specifications utilizing ID and OD mount portable machinery. When resurfacing the flange face, WSI performs welding and machining to improve efficiencies and reduce costs.

- Standard raised face machining to ASME or customer specifications
- Both ID and OD mount applications
- RTJ (ring-joint) and custom groove applications
- Custom flange seal configurations

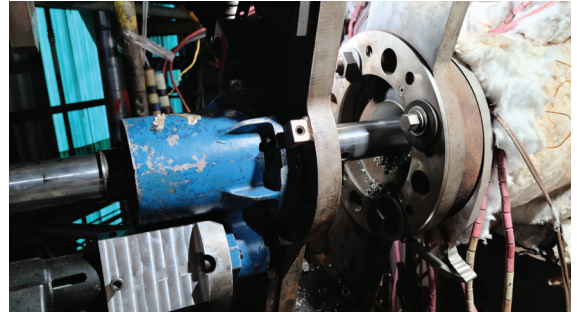


Standard raised face flanges

Line Boring

WSI offers precision line boring machining to prepare for bore welding or specified surface finish criteria. We perform on-site line boring services for ID nozzle upgrades, valve refurbishment, and pump cases.

- Bore ranges from 1.5" (38mm) to 24" (610mm)
- Onsite boring and welding solution for ID nozzle repair and upgrade
- Process and tooling utilized for valve refurbishment



Line boring

Pipe Severing & Beveling

For all pipe size ranges and thicknesses, WSI provides standard degree and compound bevels, as well as J-bevels which are preferred for machine welding applications. Our pipe prep capabilities include clamshell pipe cutting and beveling, pipe or tube end prep, and heavy wall, compound bevel pipe prep. In addition, WSI-owned J-Prep tooling and in-place staff allow for virtually any diameter or thickness pipe or tube.

- Pipe fabrication and new construction (cut to size and bevel)
- New installation (in-field design change and valve upgrades)
- Single-point compound-beveling using clamshell with bridge slide
- Counterbore attachment models ensure ASME and customer specifications
- Piping repair and replacement, including valve replacement



Counterbores using clamshell lathes

Insitu Drilling & Tapping

WSI's proprietary tooling, precision equipment, and best practices provide high-quality, cost-effective drilling and tapping services. From stud removal and tapping to valve refurbishment and thermowell repairs, we extend the operational lifespan of your critical assets.

- Small bore welding restoration
- Nozzle, tube, and pipe relocation
- Valve refurbishment
- Saddle-mount equipment configurations for drilling gamma ports and weldolets
- Engineered solutions for specific applications



Drilling gamma ports and weldolets



An Avail Infrastructure Solutions Company

availinfra.com/wsi

WSI
560 Horizon Drive
Suite 100
Suwanee, GA 30024
T: 678.728.9100

For more information, please email
wsj-usa@availinfra.com or
visit availinfra.com/wsi