

# INSTALLATION DATA SHEET

## CHL SERIES

### EMERGENCY LUMINAIRE FOR USE IN HAZARDOUS LOCATIONS

Class I, Division 2, Groups A, B, C & D

Suitable for Emergency Marine Outside Type (Saltwater)

### Emergency Lighting Equipment

**IMPORTANT SAFEGUARDS: ALL INSTALLATION, MAINTENANCE, AND OR SERVICING SHOULD BE DONE BY QUALIFIED PERSONNEL ONLY.**

#### READ AND FOLLOW ALL SAFETY INSTRUCTIONS

1. Do not let power supply touch hot surfaces.
2. Do not mount near gas or electric heaters.
3. Caution: Sealed unit. Battery not replaceable. Replace entire emergency unit driver when necessary.
4. Equipment should be mounted in locations and at heights where it will not readily be subjected to tampering by unauthorized personnel.
5. The use of accessory equipment not recommended by the manufacturer may cause unsafe conditions.
6. Do not use this equipment for other than intended use.

#### SAVE THESE INSTRUCTIONS



8500 Hansen Rd.  
Houston, TX 77075 USA  
CHLEMIDS

Tel: 713-943-0340

[availinfra.com/rig-a-lite/](http://availinfra.com/rig-a-lite/)

Oct 2022

Rev. 3

# INSTALLATION DATA SHEET

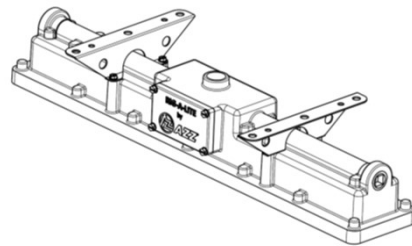
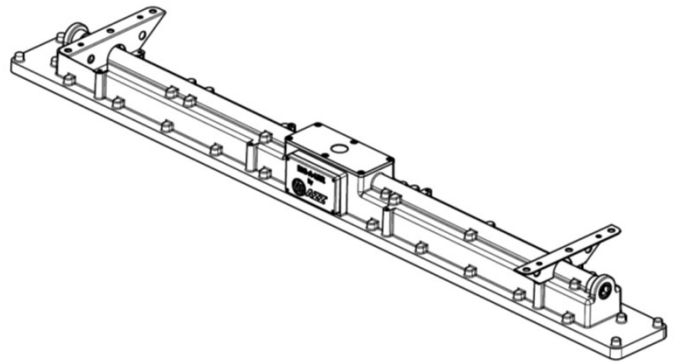
## REMOTE TEST SWITCH PROVISIONS FOR EMERGENCY BATTERY TEST

This luminaire has provision to install a remote mounted test switch for the battery. The switch shall comply with the following:

1. Switch shall be certified for the area where it is to be installed (ordinary or hazardous locations).
2. Switch shall be installed using acceptable wiring methods for the areas involved in accordance with the NEC.
3. Switch shall be connected to the emergency luminaire circuit such that when depressed it provides a transfer function and disconnects and isolates the normal input from the emergency input.
4. Switch shall be identified as to its function (i.e. – marked “Emergency Luminaire Test switch”).
5. Switch shall have electrical ratings suitable for the emergency luminaires.
6. Switch shall be manually operated type.
7. Switch shall be of :
  - a. Momentary-contact type, or
  - b. Maintained-break type that opens all ungrounded conductors and be accessible only to authorized persons.

## INSTALLATION: Mounting:

1. The luminaire should be installed per USCG-46CFR, subchapter J, parts 100-113 for all marine applications.
2. This luminaire is equipped with 3/4 NPT hubs for incoming power to be wired in accordance with Article 501 of the NEC, NFPA 70. Plug unused openings with plugs provided.
3. Secure the luminaire mounting brackets to desired mounting surface, using (4) 1/4", 5/16" or 3/8" bolts (not provided), with a minimum head size of 7/16".
4. If using the adjustable mounting brackets, set the desired position of the adjustable bracket, prior to mounting. Adjustable bracket may not exceed aiming angle of 90° from vertical.



# INSTALLATION DATA SHEET

## Wiring:

1. Before installing, make sure that the circuit is deactivated.
2. This unit is furnished completely assembled. Before installing, check the emergency luminaire label to ensure correct voltage and frequency. Operate this emergency luminaire at its rated voltage. See the emergency luminaire label for data.
3. The LED driver in this luminaire is designed to operate on grounded neutral systems only.
4. Open the wiring access cover by loosening the four (4) #10 captive screws.
5. Terminal Block for power leads are clearly marked. Connect the ground wire first. Then select the correct voltage leads as determined by the supply voltage to the luminaire and install the incoming black and white leads to the respective terminal block slot. The unit is factory wired for continuous incoming power. **If it is desired to switch the unit from a wall switch, remove the WHITE/RED wire from the terminal block and hook the incoming switched power lead to it.** The black wire must still have continuous incoming power. The maximum number of thru feed conductors is 4, of #12 AWG.
6. After all connections are made, and prior to applying power, connect the battery connector together. This will allow the battery to discharge during a loss of supply power. The luminaire will be in the emergency mode until power is applied. **Use minimum 18 AWG for incoming power supply.**
7. Re-install the wiring access cover, making sure the gasket is seated in the groove and tighten the cover screws.
8. Close any un-used hubs with plugs provided.
9. Energize unit. A minimum 24 hour charge time is required to operate as emergency lighting equipment.

## MAINTENANCE DATA:

1. Although no routine maintenance is required to keep this luminaire functional, it should be checked periodically to ensure it is working properly, and to look for any external damage.
2. To test the unit for emergency lighting function, turn the service power to the unit off. The unit will operate in the emergency lighting mode for a minimum of 90 minutes. This test should be conducted annually.
3. After testing, be sure to reapply power to the unit.
4. For optimum performance, keep the light transmission portion of the luminaire clean.
5. Fuse replacement: The fuse holder(s) and fuse(s) are located on the inside of the front wiring access cover. Replace only with fuse having the same voltage and current rating as the existing fuse. Fuse is for supplementary protection only.
6. Lens cover not to be opened in the field.



8500 Hansen Rd.  
Houston, TX 77075 USA  
CHLEMIDS

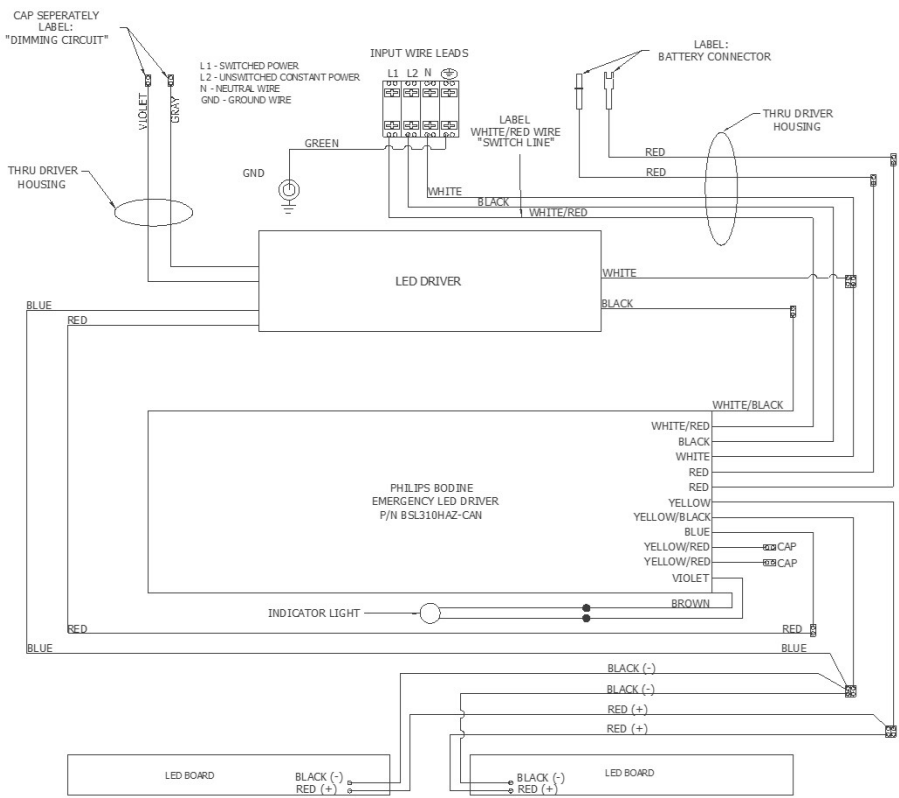
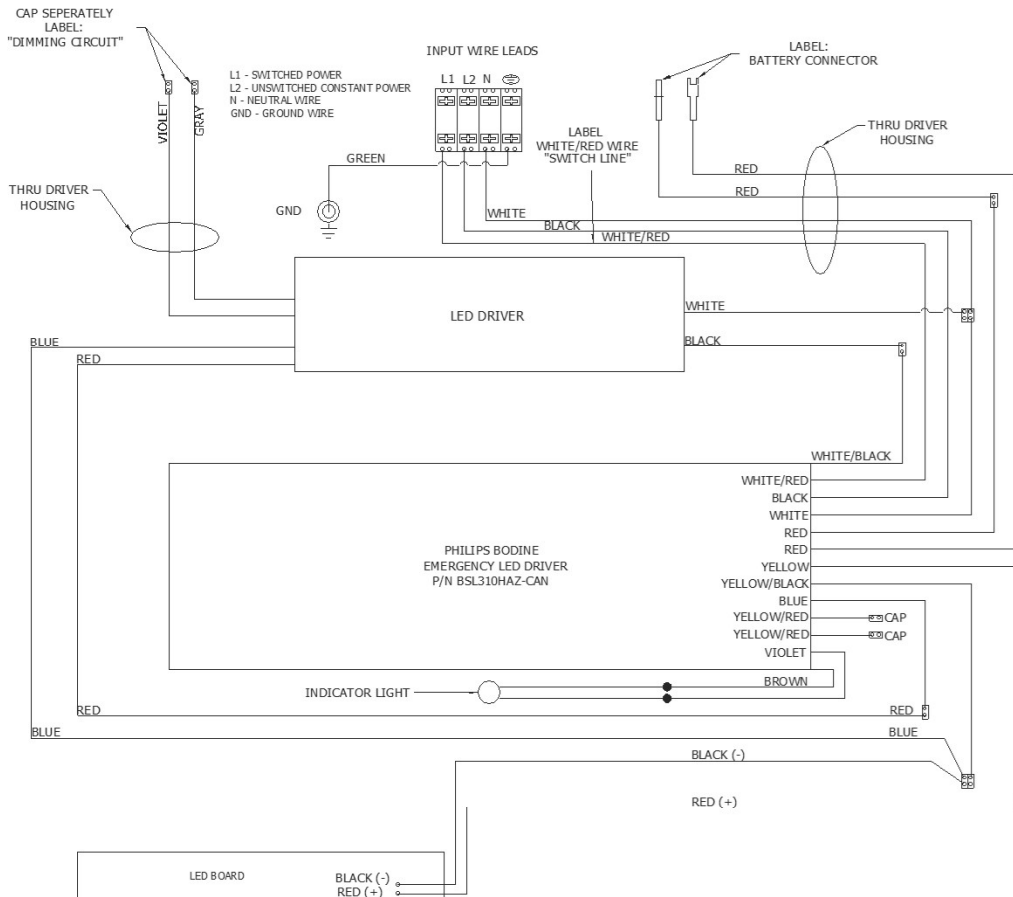
Tel: 713-943-0340

Oct 2022

[availinfra.com/rig-a-lite/](http://availinfra.com/rig-a-lite/)

Rev. 3

# WIRING DIAGRAMS



8500 Hansen Rd.  
 Houston, TX 77075 USA  
 CHLEMIDS

Tel: 713-943-0340

[availinfra.com/rig-a-lite/](http://availinfra.com/rig-a-lite/)

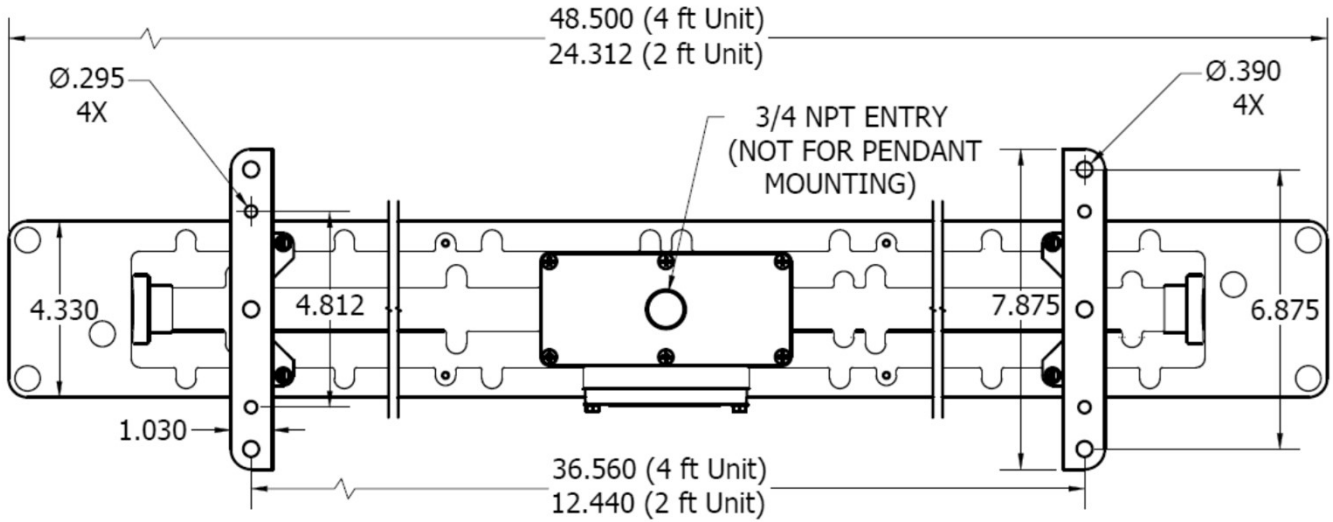
Oct 2022

Rev. 3

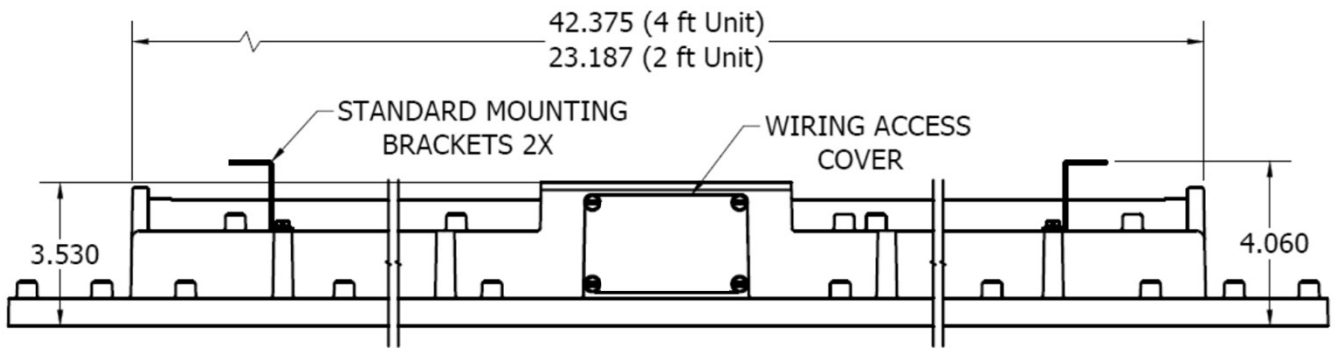
# INSTALLATION DATA SHEET

## DIMENSIONAL DATA

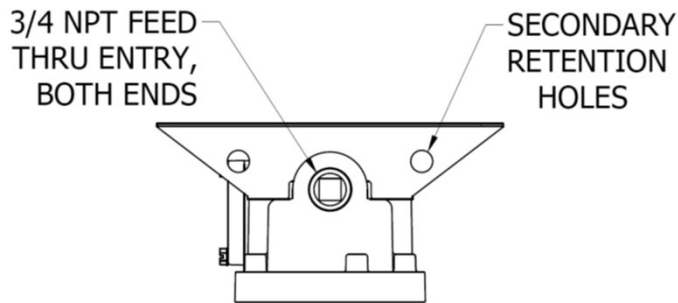
### TOP VIEW



### SIDE VIEW



### END VIEW



8500 Hansen Rd.  
Houston, TX 77075 USA  
CHLEMIDS

Tel: 713-943-0340

Oct 2022

[availinfra.com/rig-a-lite/](http://availinfra.com/rig-a-lite/)

Rev. 3