

WFHN LED Series

High-bay lighting for heavy hose-down environments

RIG-A-LITE™
An Avail Infrastructure Solutions Company



Classifications

- UL 1589 Wet Locations
- UL 8750 LED Safety
- CUL Listed
- NSF Certified Food Equipment
- High Pressure Hose-Down
- One Piece Welded Aluminum Construction
- NEMA 4X
- Rated for -20° F minimum starting temperature
- 50° C (122° F) maximum ambient temperature
- Single or dual hub mounting
- Watershed design
- Stainless steel external hardware
- Bolt-on and gasketed cast aluminum hubs
- Water tight, ideal for food processing
- Low temperature rating suitable for freezers
- 4000K CCT standard- other options available on catalog number logic page
- Five year warranty against manufacturers defect

availinfra.com/rig-a-lite

8500 Hansen Road,
Houston, TX 77075
(713) 943-0340

WFHN LED Series

High-bay lighting for heavy hose-down environments

Key Features

- 1 Heavy duty one-piece continuously welded corrosion resistant aluminum construction with electrostatically applied baked on epoxy finish
- 2 Watershed design
- 3 Stainless steel captive hardware
- 4 Philips LED System (driver & PCB)
- 5 4000K CCT LEDs Standard. 3500K or 5000K CCT available
- 6 Welded aluminum lens frame with electrostatically applied baked on epoxy finish & silicone gasket is held captive with stainless steel cable for clean appearance and cleanability. Stainless steel hinge option available
- 7 High impact clear or prismatic acrylic lens. Clear polycarbonate also available
- 8 Hinged access panel for easy access to drivers and wiring.



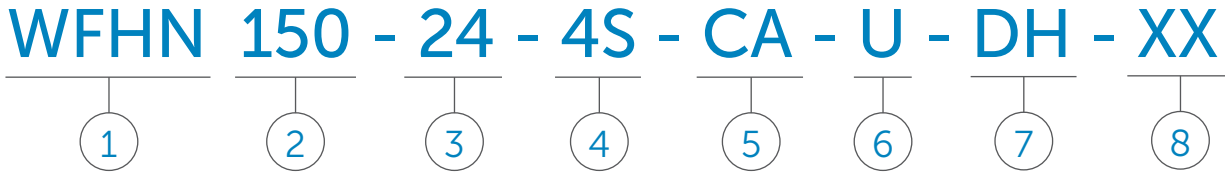
LED Series

Size	Description	Voltage	Catalog Number
2 foot X 4 foot	148 Watt LED Luminaire with Clear Acrylic Lens	120-277V 50/60HZ	WFHN150244SCAU
		347-480V 60HZ	WFHN150244SCAN
	148 Watt LED Luminaire with Prismatic Acrylic Lens	120-277V 50/60HZ	WFHN150244SPAU
		347-480V 60HZ	WFHN150244SPAN
	148 Watt LED Luminaire with Prismatic Polycarbonate Lens	120-277V 50/60HZ	WFHN150244SCPU
		347-480V 60HZ	WFHN150244SCPN

WFHN LED Series

High-bay lighting for heavy hose-down environments

Catalog Number Logic



1

BASIC SERIES

WFHN LED Fixture
UL 1598 Wet Locations
UL 8750 LED Safety
CUL Listed
NSF Certified Food Equipment
Wash Down Rated

2

LAMP CURRENT/LAMP WATTAGE

150 = 148 Watt LED

3

NOMINAL FIXTURE LENGTH

24 = 2 x 4 Foot

4

NUMBER OF LED STRIPS

4S = 4 LED Strips

5

LENS TYPE

CA = Clear Acrylic
PA = Prismatic Acrylic
CP = Clear Polycarbonate

6

VOLTAGE/FREQUENCY

N = 347 thru 480V 50/60 HZ
U = 120 thru 277V 50/60 HZ

7

MOUNTING

DH = Dual Hub 1/2 in. NPT
SH = Single Hub 3/4 in. NPT

8

OPTIONS¹

F = Single Fuse- For USL luminaires only (For luminaires rated 277 VAC or less)
D = Dimming Ballast
DF = Double Fuse- For USL luminaires only (For luminaires rated 277 VAC or less)
HNG = Hinged Lens Frame
50 = 5000K CCT

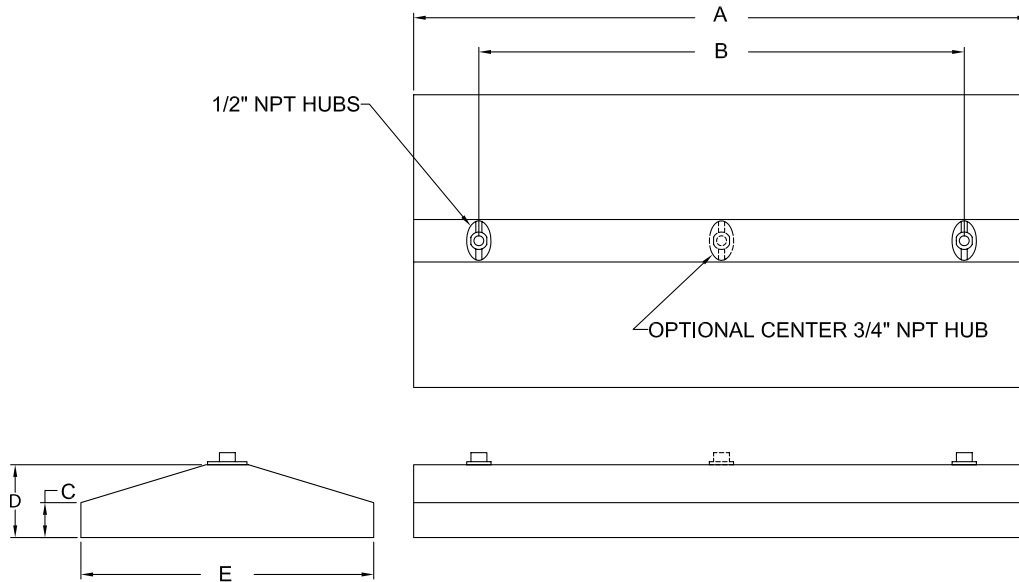
¹Consult factory for pricing

Catalog logic is for explaining catalog number structure only. Not all combinations are possible; consult factory for catalog numbers not listed in charts.

WFHN LED Series

High-bay lighting for heavy hose-down environments

Fixture Dimensions (inches)



WFHN Series	Dimensions (inches)					Hub Size	Boxed Weight	Shipping Volume (Boxed Fixtures)
	A	B	C	D	E			
2 ft. x 4 ft. Fixture	50.75	40.0	2.88	6	24.13	1/2	39 lbs.	4.7 cu. ft.

Accessories

Eye Bolt Mounting Kit



Catalog Number: 53116
 Shipping Weight: 3.0 lbs.
 Cable or Chain Not Included
 Required with Single Hub Mounting Option

Fixture Hanger



3/4 in. Male Thread
 Catalog Number: HCK75
 Shipping Weight: 1.7 lbs.

YFit Cable with 2 ft. Legs



Stainless Steel
 12 ft. Catalog Number: GRYSS122
 22 ft. Catalog Number: GRYSS222
 Shipping Weight: 4 lbs.

Occupancy Sensor



120/277VAC Sensor Module
 Catalog Number: 76007
 Shipping Weight: 0.25 lbs.
Lenses:
 10' Mounting Height Number: 76003
 20' Mounting Height Number: 76008
 40' Mounting Height Number: 76009
 (not suitable for hazardous locations)

WFHN LED Series

High-bay lighting for heavy hose-down environments

Coefficients of Utilization

WFHN150244SPAUXX

% Effective Ceiling Cavity Reflectance rcc	80			50			10		
	50	30	10	50	30	10	50	30	10
% Wall Reflectance rw									
Room Cavity Ratio RCR	Effective Floor Cavity Reflectance 20%								
0	1.19	1.19	1.19	1.11	1.11	1.11	1.02	1.02	1.02
1	1.06	1.02	.99	.99	.97	.94	.92	.90	.88
2	.94	.88	.83	.89	.84	.80	.83	.80	.77
3	.84	.76	.70	.79	.73	.69	.74	.70	.66
4	.75	.67	.61	.72	.65	.60	.67	.62	.58
5	.68	.59	.53	.64	.57	.52	.61	.55	.51
6	.61	.52	.46	.58	.51	.46	.55	.49	.45
7	.55	.46	.41	.52	.45	.40	.50	.44	.39
8	.50	.42	.36	.48	.40	.35	.45	.39	.35
9	.45	.37	.32	.43	.36	.31	.41	.35	.31

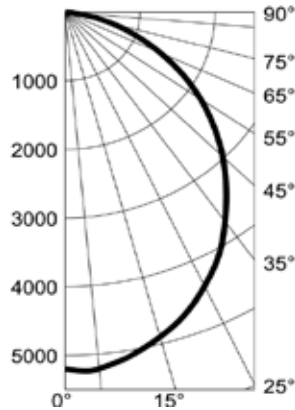
WFHN150244SCAUXX

% Effective Ceiling Cavity Reflectance rcc	80			50			10		
	50	30	10	50	30	10	50	30	10
% Wall Reflectance rw									
Room Cavity Ratio RCR	Effective Floor Cavity Reflectance 20%								
0	1.19	1.19	1.19	1.11	1.11	1.11	1.02	1.02	1.02
1	1.06	1.03	.99	1.00	.97	.95	.93	.91	.89
2	.95	.89	.84	.89	.85	.81	.83	.80	.77
3	.84	.77	.71	.80	.74	.69	.75	.71	.67
4	.75	.68	.61	.72	.65	.60	.67	.63	.59
5	.68	.59	.53	.64	.57	.52	.61	.55	.51
6	.59	.52	.46	.58	.51	.45	.55	.49	.45
7	.52	.46	.40	.52	.44	.39	.49	.43	.39
8	.49	.41	.35	.47	.40	.35	.45	.39	.34
9	.45	.36	.31	.43	.36	.31	.41	.35	.30

Candlepower Distribution

Deg.	Parl.	22.5	45	67.5	Norm
0	5196.8	5196.8	5196.8	5196.8	5196.8
15	4877.6	4856	4863.1	4880.3	4898.5
25	4433.2	4453.2	4423.1	4401.1	4404
35	3807.6	3842.6	3816.6	3730.1	3423.3
45	3086.2	3124.5	3089.7	2995.8	2973.9
55	2346.8	2392.8	2343.4	2224.3	2205.7
65	1521.8	1589.6	1552.2	1143.6	1402.1
75	745.5	770.1	754.2	674.3	659.4
85	103.8	104.1	101.8	96.9	98.6
90	2.2	2.1	2.2	2.2	2.3

Photometric Data

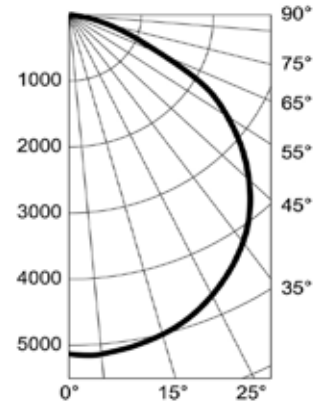


Total Lumens	13,090
Input Power (watts)	148.6
Efficacy (Lumens/Watt)	88.1
CRI	82.7
CCT	4000

Candlepower Distribution

Deg.	Parl.	22.5	45	67.5	Norm
0	5130.9	5130.9	5130.9	5130.9	5130.9
15	4933.1	4930.6	4959	4975.2	5004.9
25	4630.2	4626.9	4648.3	4663.9	4684
35	4158.1	4160.8	4171.3	4187.8	4200.5
45	3514.6	3521.1	3523.1	3522.4	3524.8
55	2711.4	2715.6	2697.5	2690.4	2676.6
65	1722.6	1736.1	1702.8	1648.9	1429
75	922.2	926.3	756.7	712.2	731.2
85	44.5	47.7	55	60.3	59.6
90	2.1	2	2	2.2	2.3

Photometric Data



Total Lumens	14,112
Input Power (watts)	148.6
Efficacy (Lumens/Watt)	95
CRI	82.6
CCT	4000



An Avail Infrastructure Solutions Company

availinfra.com/rig-a-lite

8500 Hansen Road,
Houston, TX 77075
(713) 943-0340