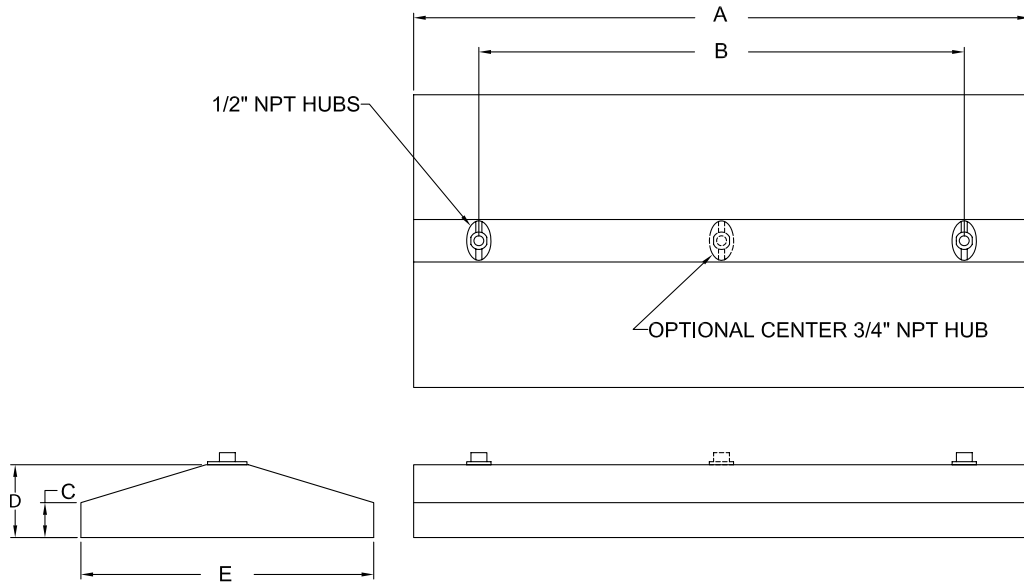


# WFHN LED Series

High-bay lighting for heavy hose-down environments

## Fixture Dimensions (inches)



WFHN Series	Dimensions (inches)					Hub Size	Boxed Weight	Shipping Volume (Boxed Fixtures)
	A	B	C	D	E			
2 ft. x 4 ft. Fixture	50.75	40.0	2.88	6	24.13	1/2	39 lbs.	4.7 cu. ft.

## Accessories

### Eye Bolt Mounting Kit



Catalog Number: 53116  
 Shipping Weight: 3.0 lbs.  
 Cable or Chain Not Included  
 Required with Single Hub Mounting Option

### Fixture Hanger



3/4 in. Male Thread  
 Catalog Number: HCK75  
 Shipping Weight: 1.7 lbs.

### YFit Cable with 2 ft. Legs



Stainless Steel  
 12 ft. Catalog Number: GRYSS122  
 22 ft. Catalog Number: GRYSS222  
 Shipping Weight: 4 lbs.

### Occupancy Sensor



120/277VAC Sensor Module  
 Catalog Number: 76007  
 Shipping Weight: 0.25 lbs.  
**Lenses:**  
 10' Mounting Height Number: 76003  
 20' Mounting Height Number: 76008  
 40' Mounting Height Number: 76009  
 (not suitable for hazardous locations)