

AFL Floodlight

Flood lighting for
hazardous locations

RIG-A-LITE™
An Avail Infrastructure Solutions Company



Classifications

- Class I, Division 2, Groups A, B, C & D
- UL 844 Hazardous Locations
- UL 1598A Marine Outside Type
- UL 1598 Wet Locations
- Zone 2, Groups IIA, IIB & IIC
- CSA C22.2 No. 250.0-88
- CSA C22.2 No. 137-M1981
- Cast Aluminum
- 55°C Ambient Temperature
- IP66
- NEMA 4X

availinfra.com/rig-a-lite

8500 Hansen Road,
Houston, TX 77075
(713) 943-0340

AFL Floodlight

Flood lighting for hazardous locations

Key Features

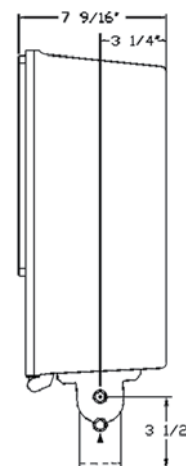
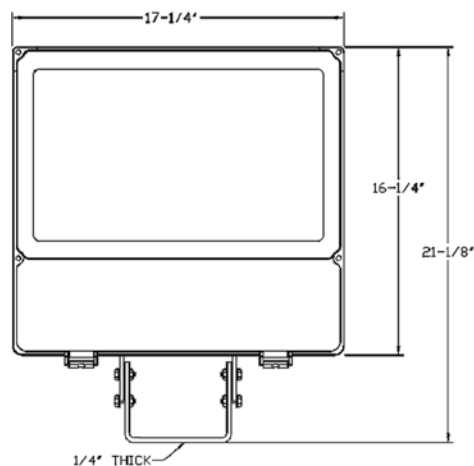
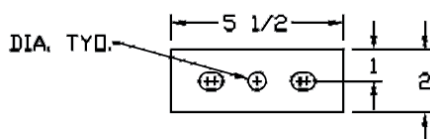
- 1 One-piece copper-free cast aluminum lamp and ballast housing with baked on powder coat finish
- 2 Precision-formed specular reflector for optimum photometric and lighting performance
- 3 Thermal, shock, heat and impact resistant tempered clear glass lens
- 4 Hinged copper-free cast aluminum lens frame with front access for easy relamping and access
- 5 Four permanent safety cable attachment points
- 6 Sturdy mounting yoke



Fixture Dimensions (inches)

Effective Projected Area 2.0 sq. ft.

175-400 Watt Metal Halide
70-400 High Pressure Sodium



AFL Floodlight

Flood lighting for hazardous locations

Catalog Number Logic

AFL1 40 - S - 04 - T - 66 - XX

1 2 3 4 5 6 7

1

BASIC SERIES

AFL Floodlight Series

- (i) AFL1 = 70-400 Watt Metal Halide and High Pressure Sodium ; Class I, Division 2, Groups A, B, C & D ; Zone 2, Groups IIA, IIB and IIC ; UL 844 Hazardous Locations ; UL 1598A Marine Outside Type ; CUL

2

LAMP CURRENT/LAMP WATTAGE

- 07 = 70 Watt
10 = 100 Watt
15 = 150 Watt
17 = 175 Watt
25 = 250 Watt
32 = 320 Watt
35 = 350 Watt
40 = 400 Watt

3

LAMP TYPE (MOGUL BASE)

- S = High Pressure Sodium (70, 100, 150, 200, 250, 400 Watt)
H = Metal Halide (70, 100, 150, 175, 250, 320, 350, 400, Watt)

4

BALLASTIC VOLTAGE

- 04 = Multi-Tap (120, 208, 240 & 277V)
12 = 120V 60 HZ
20 = 208V 60HZ
22 = 220V 50 HZ
24 = 240V 60 HZ
27 = 277V 60 HZ
34 = 347V 60 HZ
48 = 480V 60 HZ

5

MOUNTING

- T = Trunnion

6

BEAM SPREAD

- 66 = 6V X 6H

7

OPTIONS¹

- Q = Auxiliary Quartz Relay
QTD = Auxiliary Quartz Relay Hot and Cold Start
PC = Photo Cell³
V = Visor
LS = Lamp Support
FB1 = Single Fuse Block^{2,3,4}
FB2 = Double Fuse Block^{2,3}
PL = Clear Acrylic Shield
SMS = Shock Mounted Socket
SC = Safety Cable (Eye Bolt Included)
PS = Pulse Start⁵
R = Instant Restrike (HPS only up to 150W)

¹ Consult factory for pricing.

² Limited to 175W Maximum HID Lamp

³ Not suitable for hazardous locations.

⁴ Not available with multi-tap ballast unless incoming voltage is specified. When installed, one fuse block/fuse holder is provided for 120, 277V. Fuse not included. Option not available for marine listed fixtures.

⁵ Use universal or appropriate position oriented lamp.

Catalog logic is for explaining catalog number structure only. Not all combinations are possible; consult factory for catalog numbers not listed in charts.

Certification Guide

Model	Lamp	Ambient Temperature, °C	Class I, Div. 2, Group A, B, C & D	Supply Wire Suitable Temperature, °C
AFL140	MH	55	T1 (350°C)	105
AFL125	MH	55	T1 (325°C)	90
AFL117	MH	55	T1 (325°C)	90
AFL115	MH	55	T1 (325°C)	90
AFL140	HPS	55	T1 (450°C)	105
AFL125	HPS	55	T1 (350°C)	90
AFL115	HPS	55	T1 (350°C)	90

AFL Floodlight

Flood lighting for hazardous locations



Shown with optional visor.
(Lamps not included)

- Class I, Division 2, Groups A,B,C and D
(See below for suitability as designated for ①,② or ③)
- UL 844 Hazardous Locations
- UL 1598A Marine Outside Type
- Zone 2, Groups IIA, IIB and IIC
- One-piece copper-free cast aluminum lamp and ballast housing with baked on bronze polyester powder coat finish
- Precision formed specular finished reflector for optimum photometric performance
- Thermal shock, heat and impact-resistant tempered glass lens
- Marine grade hardware
- 55°C Ambient Temperature (AFL1 Series)

Fixture Type	Figure Number	Lamp Wattage	Voltage	Catalog Number	Shipping Weight (lbs.)
High Pressure Sodium	1	70	Multi-Tap*	AFL07-S-04-T-66 ①②③	34.0
			480V/60HZ	AFL07-S-48-T-66 ①②③	34.0
		100	Multi-Tap*	AFL110-S-04-T-66 ①②③	34.0
			480V/60HZ	AFL110-S-48-T-66 ①②③	34.0
		150	Multi-Tap*	AFL115-S-04-T-66 ①②③	34.0
			480V/60HZ	AFL115-S-48-T-66 ①②③	34.0
		250	Multi-Tap*	AFL125-S-04-T-66 ①②③	37.0
			480V/60HZ	AFL125-S-48-T-66 ①②③	36.5
Metal Halide	1	400	Multi-Tap*	AFL140-S-04-T-66 ①②③	39.5
			480V/60HZ	AFL140-S-48-T-66 ①②③	39.0
		175	Multi-Tap*	AFL117-H-04-T-66-PS ①②	35.0
			480V/60HZ	AFL117-H-48-T-66-PS ①②	35.0
		250	Multi-Tap*	AFL125-H-04-T-66-PS ①②③	35.0
			480V/60HZ	AFL125-H-48-T-66-PS ①②③	34.0
		320	Multi-Tap*	AFL132-H-04-T-66-PS ①②③	39.5
			480V/60HZ	AFL132-H-48-T-66-PS ①②③	39.0
		350	Multi-Tap*	AFL135-H-04-T-66 ①②③	36.5
			480V/60HZ	AFL135-H-48-T-66 ①②③	36.5
		400	Multi-Tap*	AFL140-H-04-T-66 ①②③	36.5
			480V/60HZ	AFL140-H-48-T-66 ①②③	36.5

*120/208/240/277V 60HZ

① Class I, Division 2, UL 844 Listed

② UL 1598A Listed

③ CUL

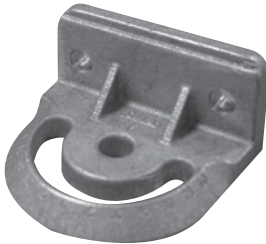
AFL Floodlight

Flood lighting for hazardous locations

Accessories

180° Yoke Horizontal Mounting Kit

180° Adjustment, Includes (2) 1/2 in. Bolts
Catalog Number: FLB-2
Shipping Weight: 1.4 lbs.



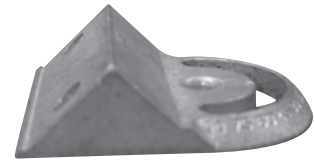
90° Yoke Horizontal Mounting Kit

90° Adjustment, Includes (2) 1/2 in. Bolts
Catalog Number: FLB-2-90
Shipping Weight: 1.3 lbs.



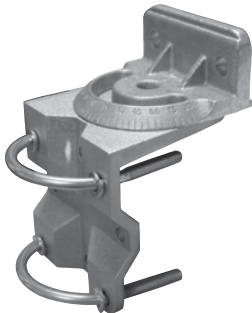
45° Yoke Horizontal Mounting Kit

45° Adjustment, Includes (2) 1/2 in. Bolts
Catalog Number: FLB-2-45
Shipping Weight: 1.5 lbs.



Wall or Pole Mounting Kit

Wall or Pole Mount, Includes (2) U-Bolts
Catalog Number: FLB-3
Shipping Weight: 3.6 lbs.



Pole Top Mounting Kit

Gasket Wiring Compartment Adapts
Horizontal or Vertical Mounting Yokes,
Includes (8) Set Screws,
Catalog Number: RSF5
Shipping Weight: 5 lbs.



Note: FLB-3 and FLB-5 fit 2 in. to 2-1/2 in. pipe size (2-3/8 in. to 2-7/8 in. O.D.)

RIG-A-LITE™
An Avail Infrastructure Solutions Company

availinfra.com/rig-a-lite

8500 Hansen Road,
Houston, TX 77075
(713) 943-0340

© 2022 Avail Infrastructure Solutions 11/2022 GDI